

MISSION CARMEL
A CONDOMINIUM
 Section 26, Township 20 South, Range 25 East
 Lake County, Florida
 Town of Howey-in-the-Hills

DESCRIPTION

THAT PORTION OF THE NORTHEAST 1/4 OF SECTION 26, TOWNSHIP 20 SOUTH, RANGE 25 EAST, AND BEING A PORTION OF THE UNRECORDED MAP OF HOWEY-IN-THE-HILLS, LAKE COUNTY, FLORIDA, DESCRIBED AS FOLLOWS:

BEGIN AT THE SOUTHWEST CORNER OF 'MISSION SONOMA', A CONDOMINIUM, AS RECORDED IN OFFICIAL RECORD BOOK 1532, PAGES 323 THROUGH 413, OF THE PUBLIC RECORDS OF LAKE COUNTY, FLORIDA; THENCE ALONG THE SOUTHERLY BOUNDARY OF SAID 'MISSION SONOMA', THE FOLLOWING TWO (2) COURSES: RUN NORTH 63°47'30" EAST FOR 199.00 FEET; THENCE NORTH 86°05'23" EAST FOR 123.79 FEET; THENCE NORTH 60°03'16" EAST FOR 50.23 FEET TO THE WESTERLY RIGHT-OF-WAY LINE OF STATE ROAD NO. 19, (PALM AVENUE.) AND TO AN INTERSECTION WITH A CIRCULAR CURVE CONCAVE SOUTHWESTERLY HAVING A CHORD BEARING OF SOUTH 23°22'54" EAST AND A RADIUS OF 2,241.83 FEET; THENCE ALONG SAID WESTERLY RIGHT-OF-WAY LINE THE FOLLOWING TWO (2) COURSES: RUN SOUTHEASTERLY ALONG THE ARC OF SAID CURVE THROUGH A CENTRAL ANGLE OF 12°36'04", A DISTANCE OF 493.05 FEET TO THE POINT OF TANGENCY; THENCE SOUTH 17°04'52" EAST FOR 253.91 FEET TO THE NORTHEAST CORNER OF 'MISSION SANTA CRUZ' A CONDOMINIUM', AS RECORDED IN CONDOMINIUM BOOK 1, PAGES 60 THROUGH 64 OF THE PUBLIC RECORDS OF LAKE COUNTY, FLORIDA; THENCE ALONG THE NORTHERLY AND WESTERLY BOUNDARY OF LANDS DESCRIBED IN OFFICIAL RECORD BOOK 1961, PAGE 1318 OF THE PUBLIC RECORDS OF LAKE COUNTY, FLORIDA THE FOLLOWING TWO (2) COURSES: RUN NORTH 77°58'20" WEST FOR 95.83 FEET; THENCE SOUTH 17°18'22" EAST FOR 46.80 FEET TO THE NORTHERLY BOUNDARY OF AFORESAID 'MISSION SANTA CRUZ' A CONDOMINIUM'; THENCE ALONG SAID NORTHERLY BOUNDARY THE FOLLOWING THREE (3) COURSES: RUN SOUTH 72°47'39" WEST FOR 56.85 FEET; THENCE SOUTH 00°08'21" EAST FOR 49.95 FEET; THENCE SOUTH 47°55'19" WEST FOR 177.46 FEET; THENCE SOUTH 89°58'02" WEST ALONG THE NORTHERLY BOUNDARY OF SAID 'MISSION SANTA CRUZ' AND THE WESTERLY EXTENSION THEREOF FOR 50.57 FEET; THENCE NORTH 00°01'58" WEST FOR 175.91 FEET; THENCE NORTH 46°32'51" EAST FOR 52.95 FEET; THENCE NORTH 00°01'58" WEST FOR 195.25 FEET; THENCE NORTH 27°51'25" WEST FOR 54.12 FEET; THENCE NORTH 55°17'03" WEST FOR 72.09 FEET; THENCE SOUTH 79°33'13" WEST FOR 187.64 FEET; THENCE NORTH 10°30'07" WEST FOR 65.59 FEET; THENCE NORTH 16°20'37" WEST FOR 170.28 FEET; THENCE NORTH 05°10'12" WEST FOR 93.42 FEET TO THE POINT OF BEGINNING, LESS AND EXCEPT TRACTS A, B AND C, AS SHOWN ON PAGE 2 OF EXHIBIT "A".

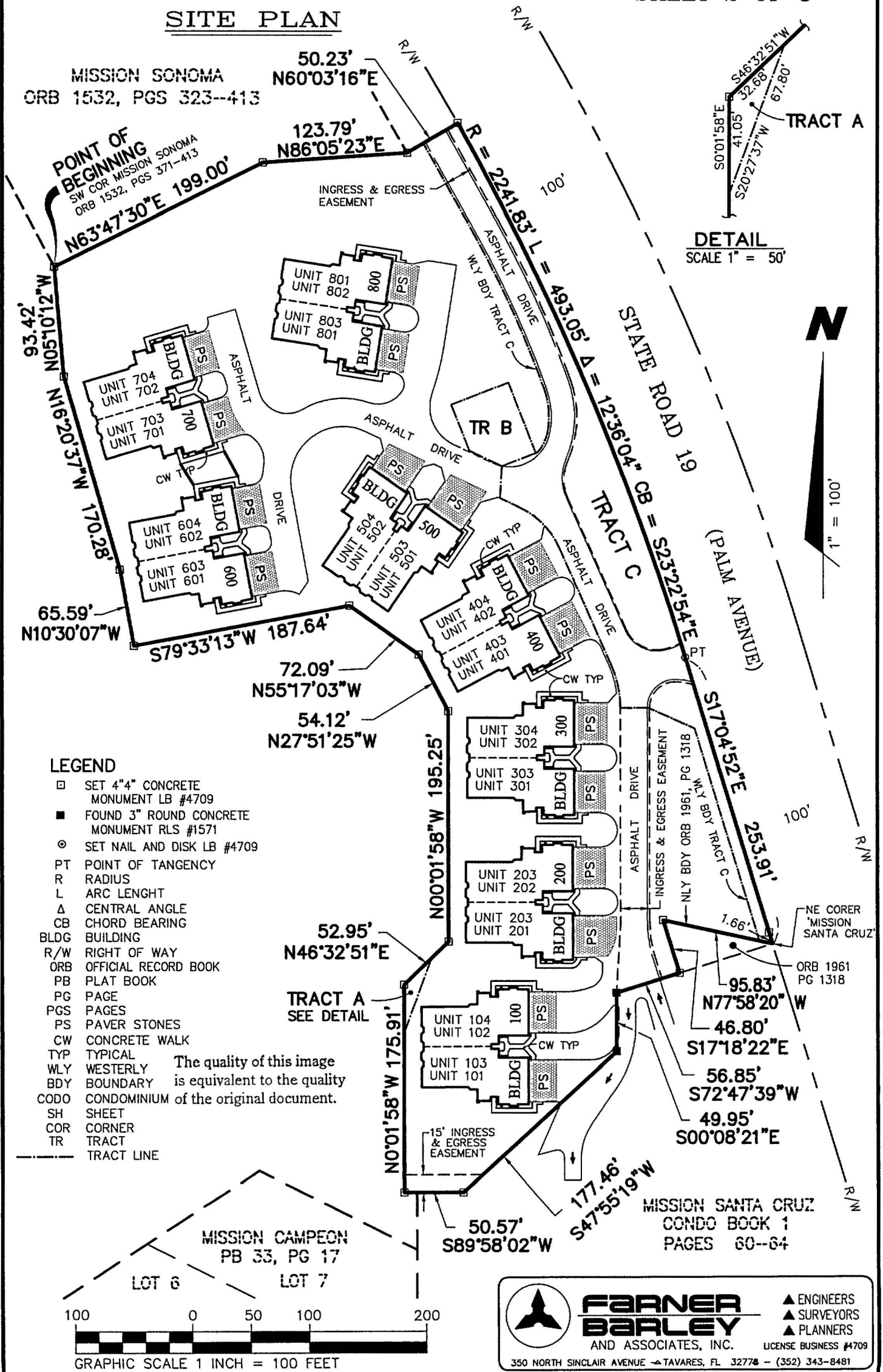


EXHIBIT "A" MISSION CARMEL A CONDOMINIUM

Section 26, Township 20 South, Range 25 East
Lake County, Florida
Town of Howey-in-the-Hills

SHEET 2 OF 3

SITE PLAN



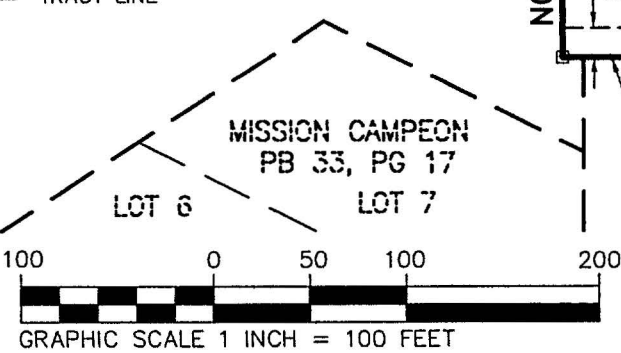
DETAIL
SCALE 1" = 50'



LEGEND

- SET 4"4" CONCRETE MONUMENT LB #4709
- FOUND 3" ROUND CONCRETE MONUMENT RLS #1571
- ⊙ SET NAIL AND DISK LB #4709
- PT POINT OF TANGENCY
- R RADIUS
- L ARC LENGTH
- Δ CENTRAL ANGLE
- CB CHORD BEARING
- BLDG BUILDING
- R/W RIGHT OF WAY
- ORB OFFICIAL RECORD BOOK
- PB PLAT BOOK
- PG PAGE
- PGS PAGES
- PS PAVER STONES
- CW CONCRETE WALK
- TYP TYPICAL
- WLY WESTERLY
- BDY BOUNDARY
- CODO CONDOMINIUM of the original document.
- SH SHEET
- COR CORNER
- TR TRACT
- TRACT LINE

The quality of this image is equivalent to the quality of the original document.



FARNER BARLEY
AND ASSOCIATES, INC.
350 NORTH SINCLAIR AVENUE - TAVARES, FL 32778 - (352) 343-8481

- ▲ ENGINEERS
- ▲ SURVEYORS
- ▲ PLANNERS

LICENSE BUSINESS #4709

EXHIBIT "A"
MISSION CARMEL
A CONDOMINIUM

Section 26, Township 20 South, Range 25 East
 Lake County, Florida
 Town of Howey-in-the-Hills

SHEET 3 OF 3

NOTES:

1. REPRODUCTIONS OF THIS SURVEY ARE NOT VALID WITHOUT THE SIGNATURE AND THE ORIGINAL RAISED SEAL OF A FLORIDA LICENSED SURVEYOR AND MAPPER.
2. BEARINGS SHOWN HEREON ARE BASED ON MISSION SONOMA, AS RECORDED IN OFFICIAL RECORDS BOOK 1532, PAGES 371-413, PUBLIC RECORDS OF LAKE COUNTY, FLORIDA REFERENCED TO THE SOUTH LINE THEREOF.
3. NO UNDERGROUND IMPROVEMENTS ARE SHOWN HEREON.
4. LAND SHOWN HEREON LIES WITHIN FLOOD ZONE "X" (AREAS DETERMINED TO BE OUTSIDE THE 500-YEAR FLOODPLAIN) AS SHOWN ON FLOOD INSURANCE RATE MAP NO. 12069C0460D, EFFECTIVE DATE JULY 3, 2002.
5. ELEVATIONS SHOWN HEREON ARE RELATED TO NATIONAL GEODETIC VERTICAL DATUM OF 1929, AND ARE BASED ON SITE BENCHMARKS PREVIOUSLY SET BY THIS FIRM.
6. EACH UNIT IS COMPOSED OF AN APARTMENT, THE DIMENSIONS OF WHICH ARE SHOWN HEREIN, ARE AVERAGE TO UNFINISHED WALLS AND CEILINGS, AND TO AND THE FINISHED FLOORS. EACH UNIT (APARTMENT) CONSIST OF THE SPACE BOUNDED BY A VERTICAL PROJECTION OF THE UNIT BOUNDARY LINES AS SHOWN HEREON AND THE HORIZONTAL PLANES OF THE FLOOR AND CEILING AS SHOWN FOR EACH RESPECTIVE BUILDING AND RESPECTIVE FLOOR CONTAINED THEREIN, NOTWITHSTANDING THE ACTUAL LOCATION OF THE WALLS, CEILINGS AND FLOORS, THE UNITS SHALL CONSISTS OF THE SPACE HEREIN DEFINED.
7. WHERE ORNAMENTAL CEILING FEATURES SUCH AS SOFFITS, CEILING VAULTS, ETC. OCCUR, THESE ARE TO BE CONSIDERED PART OF THE UNIT IN WHICH THEY ARE LOCATED.

CERTIFICATE OF SURVEYOR:

THE UNDERSIGNED, BEING A REGISTERED LAND SURVEYOR AUTHORIZED TO PRACTICE IN THE STATE OF FLORIDA, DOES HEREBY CERTIFY THAT (i) A SURVEY HAS BEEN MADE OF THE LANDS, AND THAT THE PLOT PLAN AND GRAPHIC DESCRIPTION OF IMPROVEMENTS, WHICH INCLUDES THE SURVEY ARE DESIGNATED AS EXHIBIT "A" CONSISTING OF SHEETS 1 THROUGH 3, EXHIBIT "A-1" CONSISTING OF SHEETS 1 AND 2 AND EXHIBIT "B", SHEETS 1, 2, 3, 34 THROUGH 45 OF 'MISSION CARMEL', A CONDOMINIUM ("CONDOMINIUM"), AS REFLECTED IN THAT CERTAIN DECLARATION OF CONDOMINIUM ~~RECORDED IN OFFICIAL~~ *to which this certificate is attached*
~~RECORD BOOK _____, PAGE _____, PUBLIC RECORDS OF LAKE COUNTY, FLORIDA,~~ AS SAME MAY BE AMENDED FROM TIME TO TIME ("DECLARATION"), AND (ii) RELATING TO MATTERS OF SURVEY, THE CONSTRUCTION OF UNITS 601-604, 701-704, AND AND BUILDINGS 600 AND 700 OF THE CONDOMINIUM CONTAINING SAID UNITS, AND ALL PLANNED IMPROVEMENTS, LANDSCAPING, UTILITY SERVICES AND ACCESS TO THESE UNITS AND THE BUILDING AND THE COMMON ELEMENT FACILITIES, IF ANY, SERVICING THE BUILDING ALL AS SET FORTH IN THE DECLARATION, IS A TRUE AND CORRECT GRAPHIC DESCRIPTION OF IMPROVEMENTS CONTAINED IN THE DECLARATION, SO THAT THE EXHIBITS, TOGETHER WITH THE PROVISIONS OF THE DECLARATION DESCRIBING THE CONDOMINIUM PROPERTY, IS AN ACCURATE REPRESENTATION OF THE LOCATIONS AND DIMENSIONS OF THE IMPROVEMENTS, AND THAT THE IDENTIFICATION, LOCATION, AND DIMENSIONS OF THE COMMON ELEMENTS OF EACH UNIT CAN BE DETERMINED FROM THE EXHIBITS AND THE DECLARATION, AS REQUIRED BY SECTION 718.104 (4) (E), FLORIDA STATUTES. AS OF THE DATE HEREOF, BUILDINGS 600 AND 700 AS DEPICTED ON THE EXHIBITS, WHICH INCLUDES UNITS 601-604 AND 701-704 ARE SUBSTANTIALLY COMPLETE.

STATE OF FLORIDA
 COUNTY OF LAKE

SURVEYOR *Michael R. Burnette*
 MICHAEL R. BURNETTE P.S.M. No. 3669

THE FOREGOING INSTRUMENT WAS ACKNOWLEDGED BY ME

WITNESS *Janelle D. Pratt*

THIS 15th DAY OF *September*
Deidra Fontaine
Deidra Fontaine
 PRINT NAME

WITNESS *Janeen Mathias*

DATE: *9-15-05*

NOTARY SEAL:



Deidra Fontaine
 Commission # DD398322
 Expires February 20, 2009
 Bonded Troy Fair - Insurance, Inc. 800-385-7019

The quality of this image
 is equivalent to the quality
 of the original document.

**FARNER
 BARLEY**
 AND ASSOCIATES, INC. LICENSE BUSINESS #4709

▲ ENGINEERS
 ▲ SURVEYORS
 ▲ PLANNERS

350 NORTH SINCLAIR AVENUE - TAVARES, FL 32778 - (352) 343-8481

EXHIBIT "A-1"
MISSION CARMEL
A CONDOMINIUM

Section 26, Township 20 South, Range 25 East
Lake County, Florida
Town of Howey-in-the-Hills

SHEET 1

DESCRIPTION

MISSION CARMEL PHASE 6

THAT PORTION OF THE NORTHEAST 1/4 OF SECTION 26, TOWNSHIP 20 SOUTH, RANGE 25 EAST, AND BEING A PORTION OF THE UNRECORDED MAP OF HOWEY-IN-THE-HILLS, LAKE COUNTY, FLORIDA, DESCRIBED AS FOLLOWS:

COMMENCE AT THE SOUTHWEST CORNER OF 'MISSION SONOMA', A CONDOMINIUM, AS RECORDED IN OFFICIAL RECORD BOOK 1532, PAGES 323 THROUGH 413, OF THE PUBLIC RECORDS OF LAKE COUNTY, FLORIDA; THENCE SOUTH 05°10'12" EAST FOR 93.42 FEET; THENCE SOUTH 16°20'37" EAST FOR 104.86 FEET TO THE POINT OF BEGINNING; THENCE NORTH 76°34'38" EAST FOR 146.58 FEET TO AN INTERSECTION WITH A CIRCULAR CURVE CONCAVE WESTERLY, HAVING A CHORD BEARING OF SOUTH 00°44'55" EAST AND A RADIUS OF 26.30 FEET; THENCE SOUTHERLY ALONG THE ARC OF SAID CURVE, THROUGH A CENTRAL ANGLE OF 19°00'27", A DISTANCE OF 8.72 FEET TO A POINT OF REVERSE CURVATURE WITH A CIRCULAR CURVE CONCAVE EASTERLY, HAVING A RADIUS OF 100.00 FEET; THENCE SOUTHERLY ALONG THE ARC OF SAID CURVE THROUGH A CENTRAL ANGLE OF 19°15'27"; FOR 33.61 FEET TO THE POINT OF TANGENCY; THENCE SOUTH 10°30'07" EAST FOR 79.41 FEET; THENCE NORTH 79°29'53" EAST FOR 24.00 FEET; THENCE SOUTH 10°30'07" EAST FOR 17.34 FEET; THENCE SOUTH 79°33'13" WEST FOR 156.67 FEET; THENCE NORTH 10°30'07" WEST FOR 65.59 FEET; THENCE NORTH 16°20'37" WEST FOR 65.42 FEET TO THE POINT OF BEGINNING.

CONTAINING 0.427 ACRE, MORE OR LESS.

MISSION CARMEL PHASE 7

THAT PORTION OF THE NORTHEAST 1/4 OF SECTION 26, TOWNSHIP 20 SOUTH, RANGE 25 EAST, AND BEING A PORTION OF THE UNRECORDED MAP OF HOWEY-IN-THE-HILLS, LAKE COUNTY, FLORIDA, DESCRIBED AS FOLLOWS:

BEGIN AT THE SOUTHWEST CORNER OF 'MISSION SONOMA', A CONDOMINIUM, AS RECORDED IN OFFICIAL RECORD BOOK 1532, PAGES 323 THROUGH 413, OF THE PUBLIC RECORDS OF LAKE COUNTY, FLORIDA; THENCE NORTH 63°47'30" EAST ALONG THE SOUTHERLY BOUNDARY OF SAID 'MISSION SONOMA', FOR 140.64 FEET; THENCE SOUTH 16°20'37" EAST FOR 102.33 FEET; THENCE SOUTH 73°39'23" WEST FOR 24.00 FEET; THENCE SOUTH 16°20'37" EAST FOR 75.72 FEET TO A POINT OF CURVATURE WITH A CIRCULAR CURVE CONCAVE NORTHEASTERLY AND HAVING A RADIUS OF 61.04 FEET; THENCE SOUTHEASTERLY ALONG THE ARC OF SAID CURVE THROUGH A CENTRAL ANGLE OF 32°44'17" FOR 34.88 FEET TO A POINT OF REVERSE CURVATURE WITH A CIRCULAR CURVE CONCAVE SOUTHWESTERLY AND HAVING A RADIUS OF 26.30 FEET; THENCE SOUTHEASTERLY ALONG THE ARC OF SAID CURVE THROUGH A CENTRAL ANGLE OF 38°49'47"; FOR 17.82 FEET; THENCE SOUTH 76°34'38" WEST FOR 146.58 FEET; THENCE NORTH 16°20'37" WEST FOR 104.86 FEET; THENCE NORTH 05°10'12" WEST FOR 93.42 FEET TO THE POINT OF BEGINNING.

CONTAINING 0.678 ACRES, MORE OR LESS.



EXHIBIT "B"

MISSION CARMEL A CONDOMINIUM

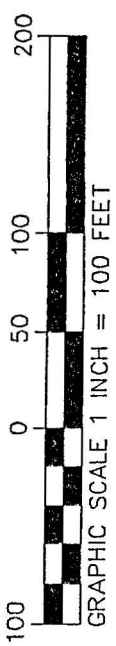
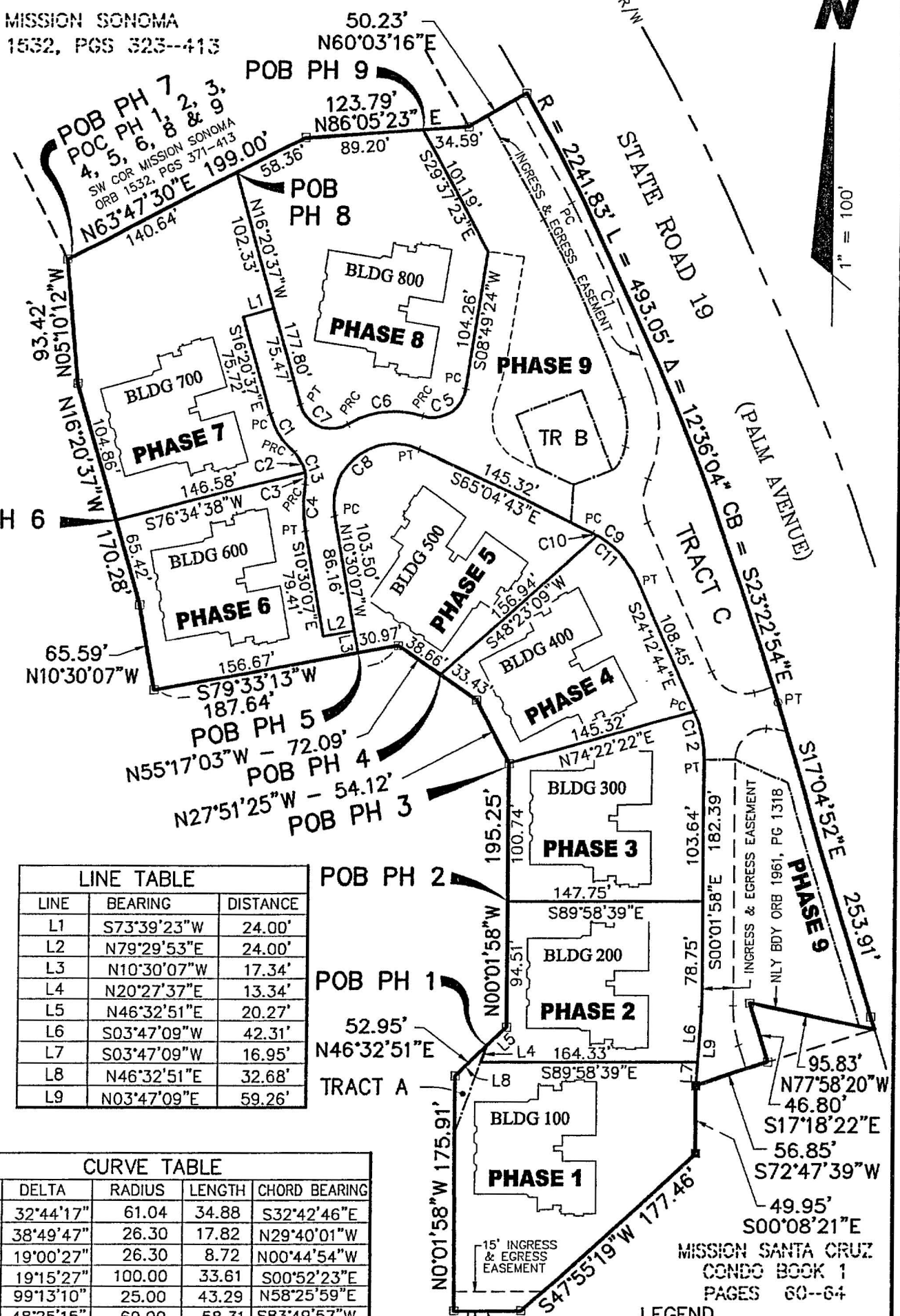
Section 26, Township 20 South, Range 25 East
Lake County, Florida
Town of Howey-in-the-Hills

COMDOMINIUM PHASES

The quality of this image
is equivalent to the quality
of the original document.

SHEET 1 OF 51

MISSION SONOMA
ORB 1532, PGS 323--413



LINE TABLE		
LINE	BEARING	DISTANCE
L1	S73°39'23"W	24.00'
L2	N79°29'53"E	24.00'
L3	N10°30'07"W	17.34'
L4	N20°27'37"E	13.34'
L5	N46°32'51"E	20.27'
L6	S03°47'09"W	42.31'
L7	S03°47'09"W	16.95'
L8	N46°32'51"E	32.68'
L9	N03°47'09"E	59.26'

CURVE TABLE				
CURVE	DELTA	RADIUS	LENGTH	CHORD BEARING
C1	32°44'17"	61.04	34.88	S32°42'46"E
C2	38°49'47"	26.30	17.82	N29°40'01"W
C3	19°00'27"	26.30	8.72	N00°44'54"W
C4	19°15'27"	100.00	33.61	S00°52'23"E
C5	99°13'10"	25.00	43.29	N58°25'59"E
C6	48°25'15"	69.00	58.31	S83°49'57"W
C7	104°02'04"	25.00	45.39	S68°21'39"E
C8	125°25'23"	45.00	98.51	S52°12'35"W
C9	40°52'00"	70.00	49.93	N44°38'44"W
C10	03°08'32"	70.00	3.84	N63°30'27"W
C11	37°43'27"	70.00	46.09	N43°04'28"W
C12	24°10'46"	88.64	37.41	N12°07'21"W
C13	57°50'14"	26.30	26.55	N20°09'47"W

LEGEND
 POB POINT OF BEGINNING
 POC POINT OF COMMENCEMENT
 PH PHASE
 BLDG BUILDING

**FARNER
BARLEY**
AND ASSOCIATES, INC.
LICENSE BUSINESS #4709

▲ ENGINEERS
▲ SURVEYORS
▲ PLANNERS

350 NORTH SINCLAIR AVENUE - TAVARES, FL 32778 - (352) 343-8481

EXHIBIT "B"
MISSION CARMEL
A CONDOMINIUM

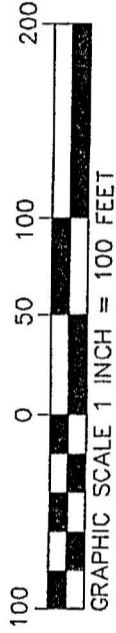
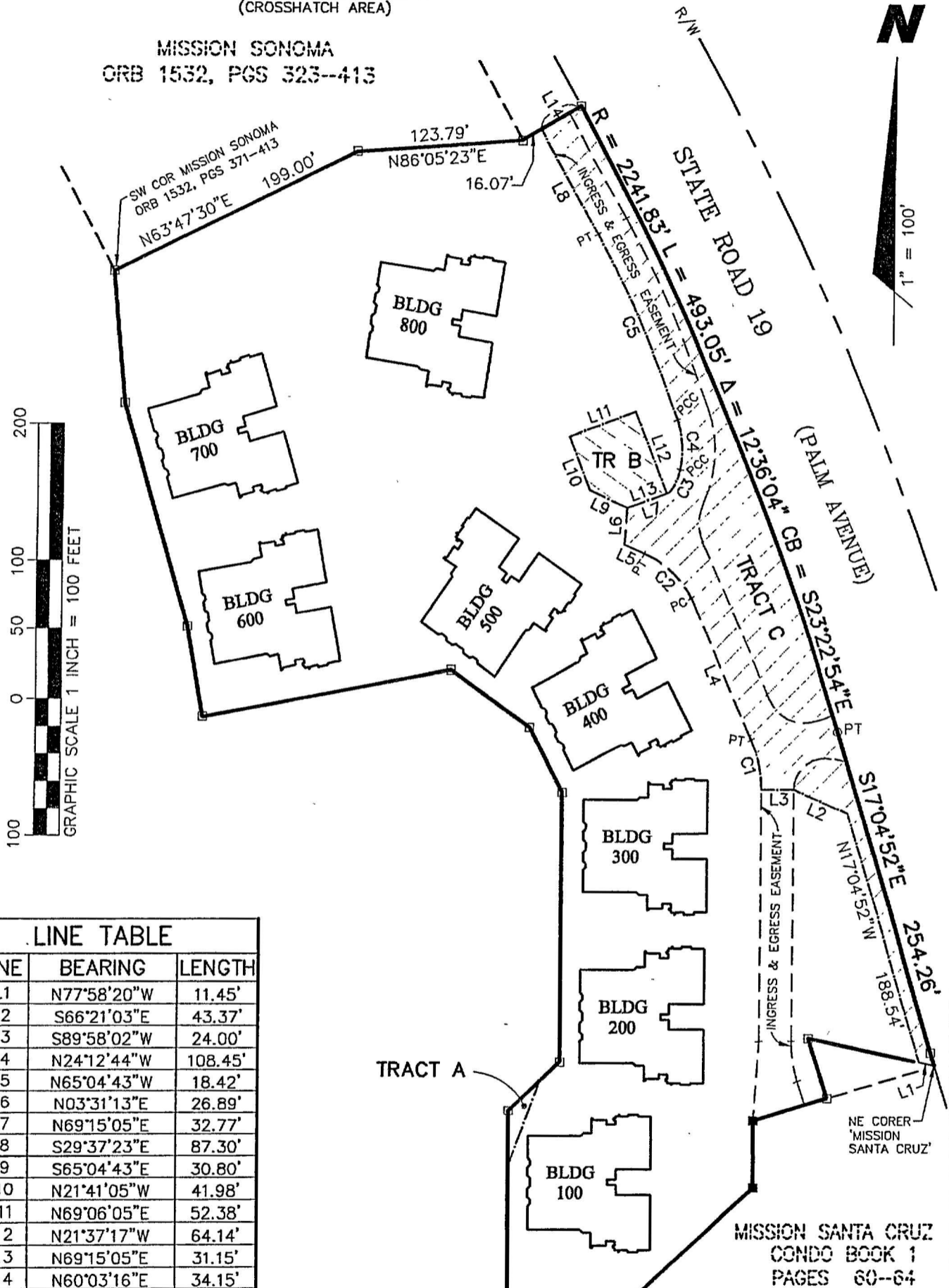
Section 26, Township 20 South, Range 25 East
Lake County, Florida
Town of Howey-in-the-Hills

TRACTS B & C
(CROSSHATCH AREA)

MISSION SONOMA
ORB 1532, PGS 323--413

The quality of this image
is equivalent to the quality
of the original document.

SHEET 2 OF 51



LINE TABLE		
LINE	BEARING	LENGTH
L1	N77°58'20"W	11.45'
L2	S66°21'03"E	43.37'
L3	S89°58'02"W	24.00'
L4	N24°12'44"W	108.45'
L5	N65°04'43"W	18.42'
L6	N03°31'13"E	26.89'
L7	N69°15'05"E	32.77'
L8	S29°37'23"E	87.30'
L9	S65°04'43"E	30.80'
L10	N21°41'05"W	41.98'
L11	N69°06'05"E	52.38'
L12	N21°37'17"W	64.14'
L13	N69°15'05"E	31.15'
L14	N60°03'16"E	34.15'

CURVE TABLE				
CURVE	CENTRAL ANGLE	RADIUS	ARC LENGTH	CHORD BEARING
C1	24°10'46"	88.64'	37.41'	N12°07'21"W
C2	40°52'00"	70.00'	49.93'	N44°38'44"W
C3	31°05'02"	35.00'	18.99'	N26°52'52"E
C4	31°06'32"	68.00'	36.92'	N04°12'55"W
C5	09°51'13"	846.74'	145.62'	N24°41'47"W

- LEGEND
- PC POINT OF CURVATURE
 - PT POINT OF TANGENCY
 - PCC POINT OF COMPOUND CURVATURE
 - PRC POINT OF REVERSE CURVATURE
 - ORB OFFICIAL RECORD BOOK
 - PGS PAGES
 - BLDG BUILDING

FARNER BARLEY
AND ASSOCIATES, INC.

▲ ENGINEERS
▲ SURVEYORS
▲ PLANNERS

LICENSE BUSINESS #4709

350 NORTH SINCLAIR AVENUE → TAVARES, FL 32778 - (352) 343-8481

The quality of this image is equivalent to the quality of the original document.

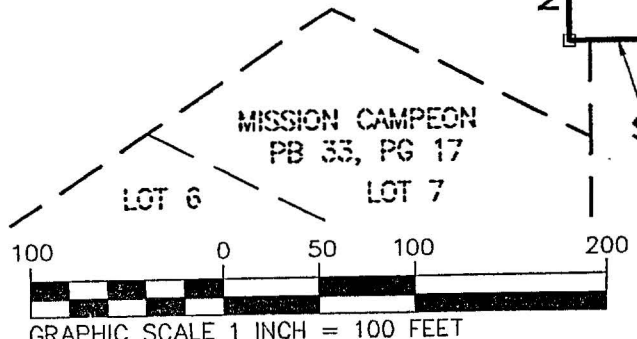
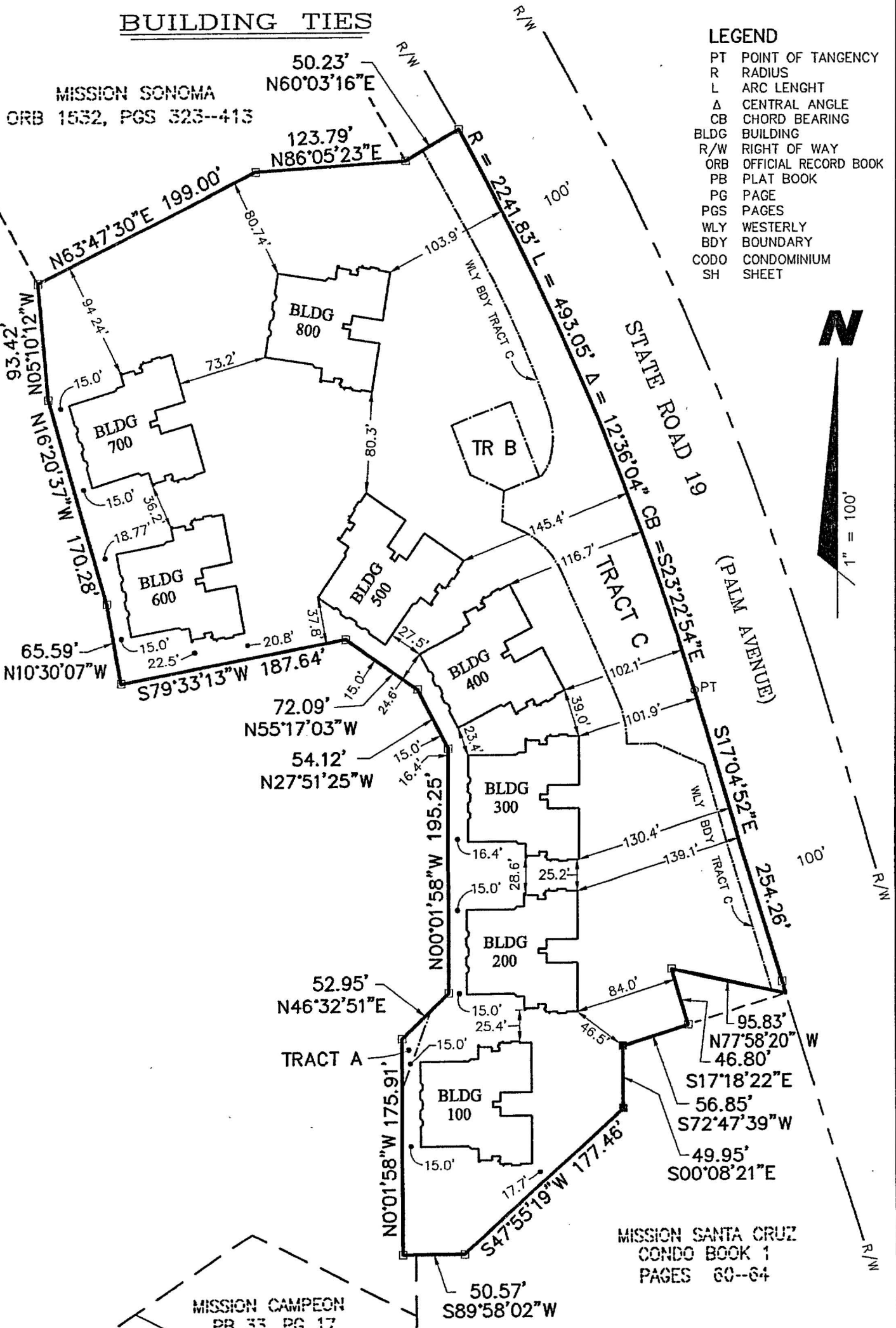
EXHIBIT "B" MISSION CARMEL A CONDOMINIUM

Section 26, Township 20 South, Range 25 East
Lake County, Florida
Town of Howey-in-the-Hills

BUILDING TIES

SHEET 3 OF 51

- LEGEND**
- PT POINT OF TANGENCY
 - R RADIUS
 - L ARC LENGTH
 - Δ CENTRAL ANGLE
 - CB CHORD BEARING
 - BLDG BUILDING
 - R/W RIGHT OF WAY
 - ORB OFFICIAL RECORD BOOK
 - PB PLAT BOOK
 - PG PAGE
 - PGS PAGES
 - WLY WESTERLY
 - BDY BOUNDARY
 - CODO CONDOMINIUM
 - SH SHEET



FARNER BARLEY
AND ASSOCIATES, INC.
350 NORTH SINCLAIR AVENUE - TAVARES, FL 32778 - (352) 343-8481

- ▲ ENGINEERS
- ▲ SURVEYORS
- ▲ PLANNERS

LICENSE BUSINESS #4709

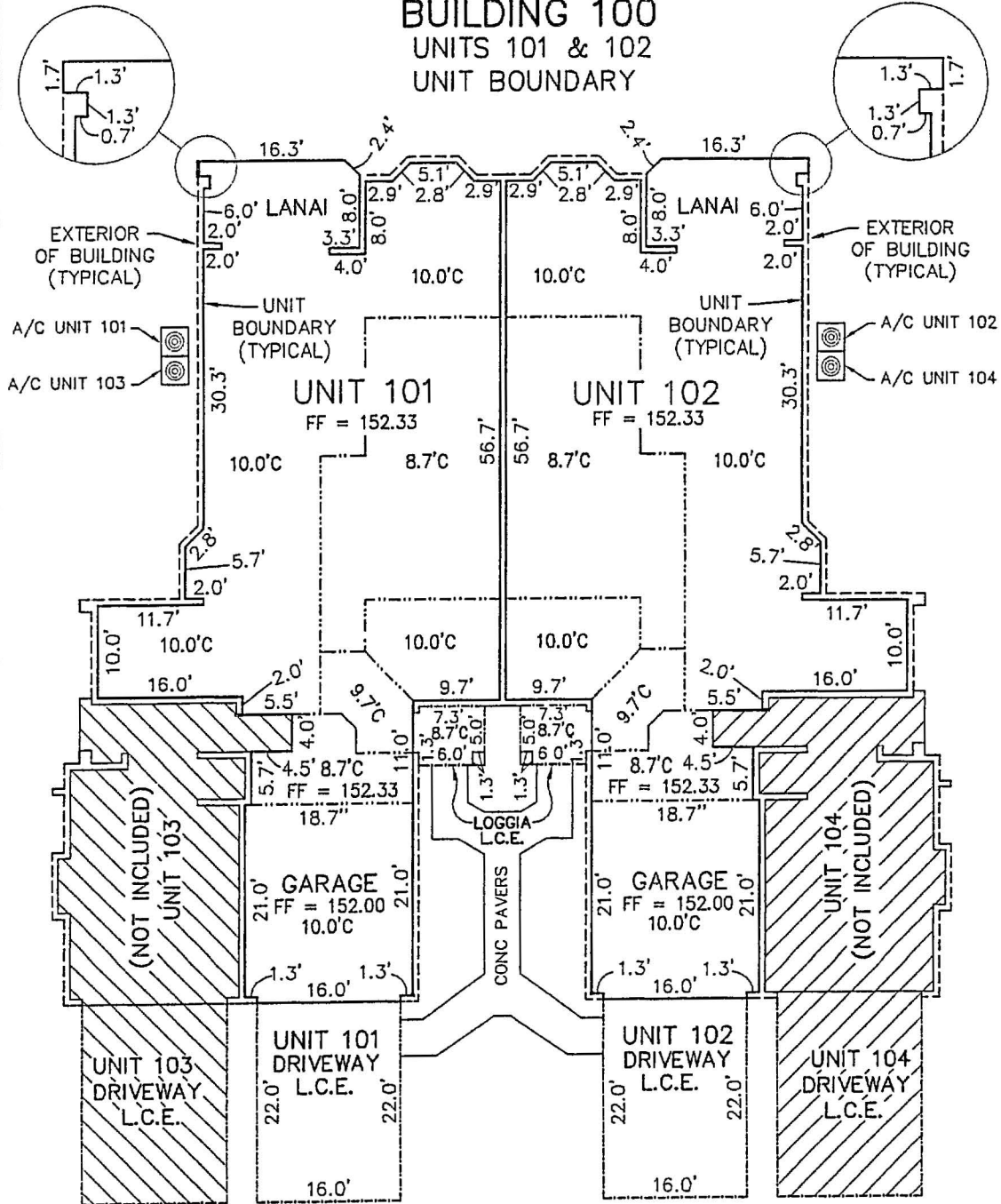
EXHIBIT "B"
MISSION CARMEL
A CONDOMINIUM

Section 26, Township 20 South, Range 25 East
Lake County, Florida, Town of Howey-in-the-Hills

The quality of this image
is equivalent to the quality
of the original document.

SHEET 4 OF 51

BUILDING 100
UNITS 101 & 102
UNIT BOUNDARY



LEGEND

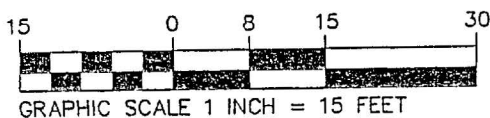
- UNIT BOUNDARY LINE
- - - BUILDING LINE
- - - L.C.E. (LIMITED COMMON ELEMENT)
- - - CEILING PARTITION
- FF FINISH FLOOR
- C HEIGHT OF UNFINISH CEILING
- A/C AIR CONDITIONAL

FIRST FLOOR PLAN



NOTE:

ALL WALLS ARE 8" UNLESS OTHERWISE NOTED



**FARNER
BARLEY**
AND ASSOCIATES, INC.

▲ ENGINEERS
▲ SURVEYORS
▲ PLANNERS

187 # 4709
350 NORTH SINCLAIR AVENUE • TAVARES, FL 32778 • (352) 343-8481

8/05/04

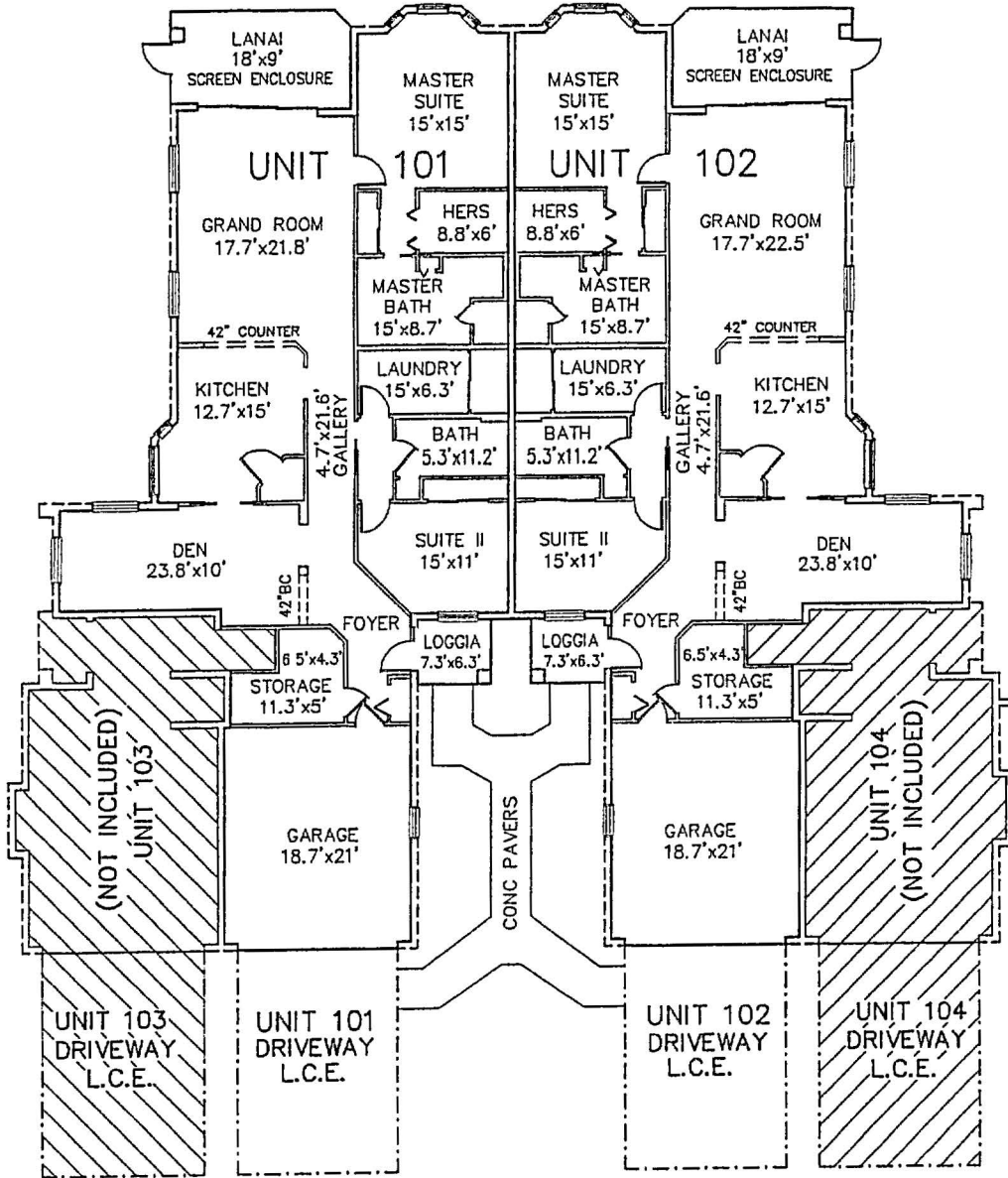
EXHIBIT "8"
MISSION CARMEL
A CONDOMINIUM

Section 26, Township 20 South, Range 25 East
Lake County, Florida, Town of Howey-in-the-Hills

The quality of this image
is equivalent to the quality
of the original document.

SHEET 5 OF 51

BUILDING 100
UNITS 101 & 102
INTERIOR WALLS



FIRST FLOOR PLAN

LEGEND

BC BOOK CASE



BARBER
BARLEY
AND ASSOCIATES, INC.
LE # 4709
▲ ENGINEERS
▲ SURVEYORS
▲ PLANNERS
350 NORTH SIMCLR AVENUE ▲ TAVARES, FL 32778 ▲ (352) 343-8481

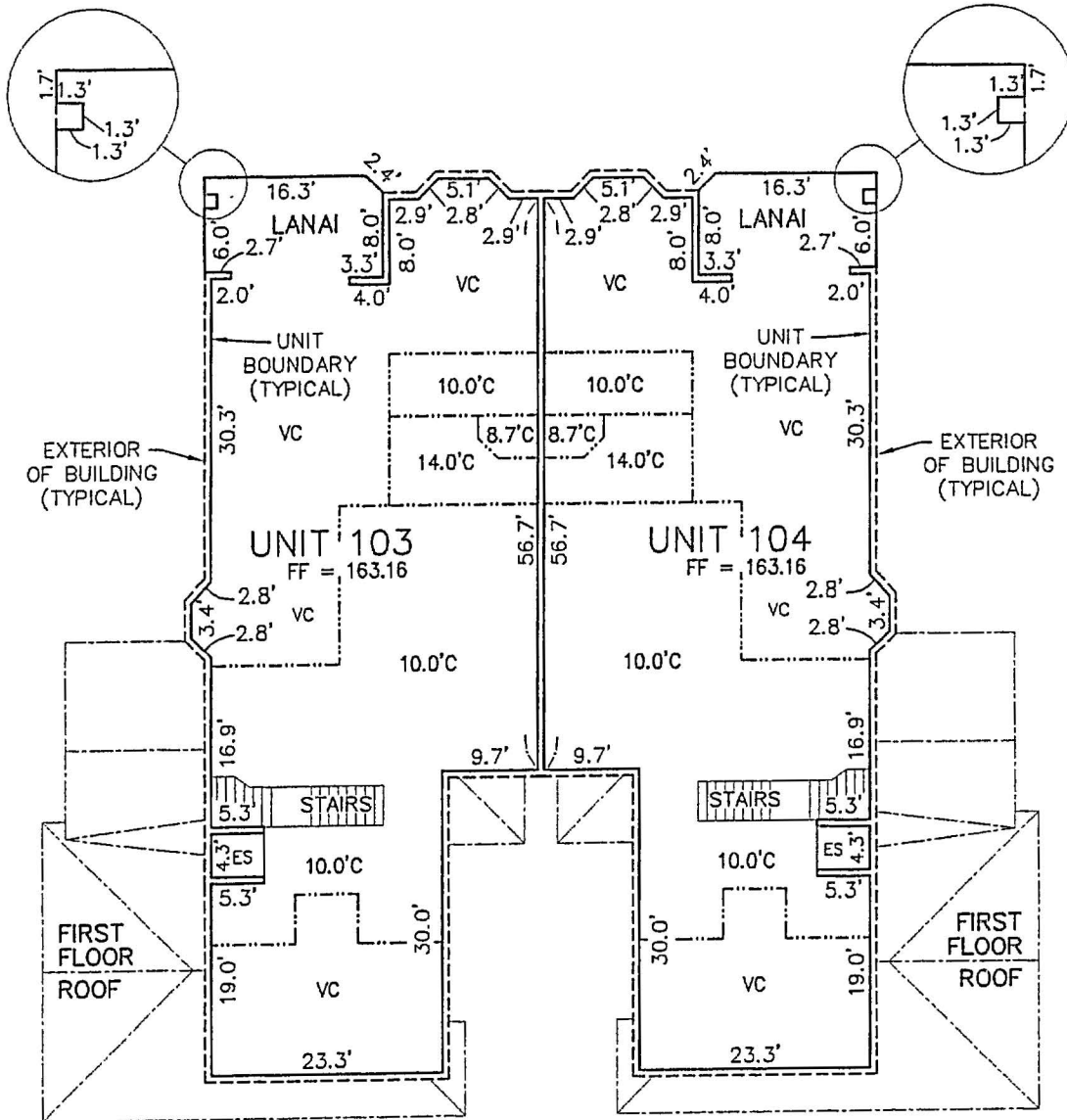
B/05/04

EXHIBIT "B"
MISSION CARMEL
A CONDOMINIUM

Section 26, Township 20 South, Range 25 East
Lake County, Florida, Town of Howey-in-the-Hills

SHEET 6 OF 51

BUILDING 100
UNITS 103 & 104
UNIT BOUNDARY

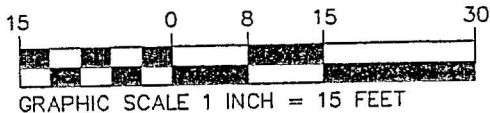


LEGEND SECOND FLOOR PLAN

- UNIT BOUNDARY LINE
- BUILDING LINE
- L.C.E. (LIMITED COMMON ELEMENT)
- CEILING PARTITION
- FF FINISH FLOOR
- C HEIGHT OF UNFINISH CEILING
- ES ELEVATOR SHAFT
- VC VAULTED CEILING



NOTE:
ALL WALLS ARE 8" UNLESS OTHERWISE NOTED



FARNER BARLEY
AND ASSOCIATES, INC.
350 NORTH SINCLAIR AVENUE • TAVARES, FL 32778 • (352) 343-8481

- ▲ ENGINEERS
- ▲ SURVEYORS
- ▲ PLANNERS
- LB # 4709

8/05/04

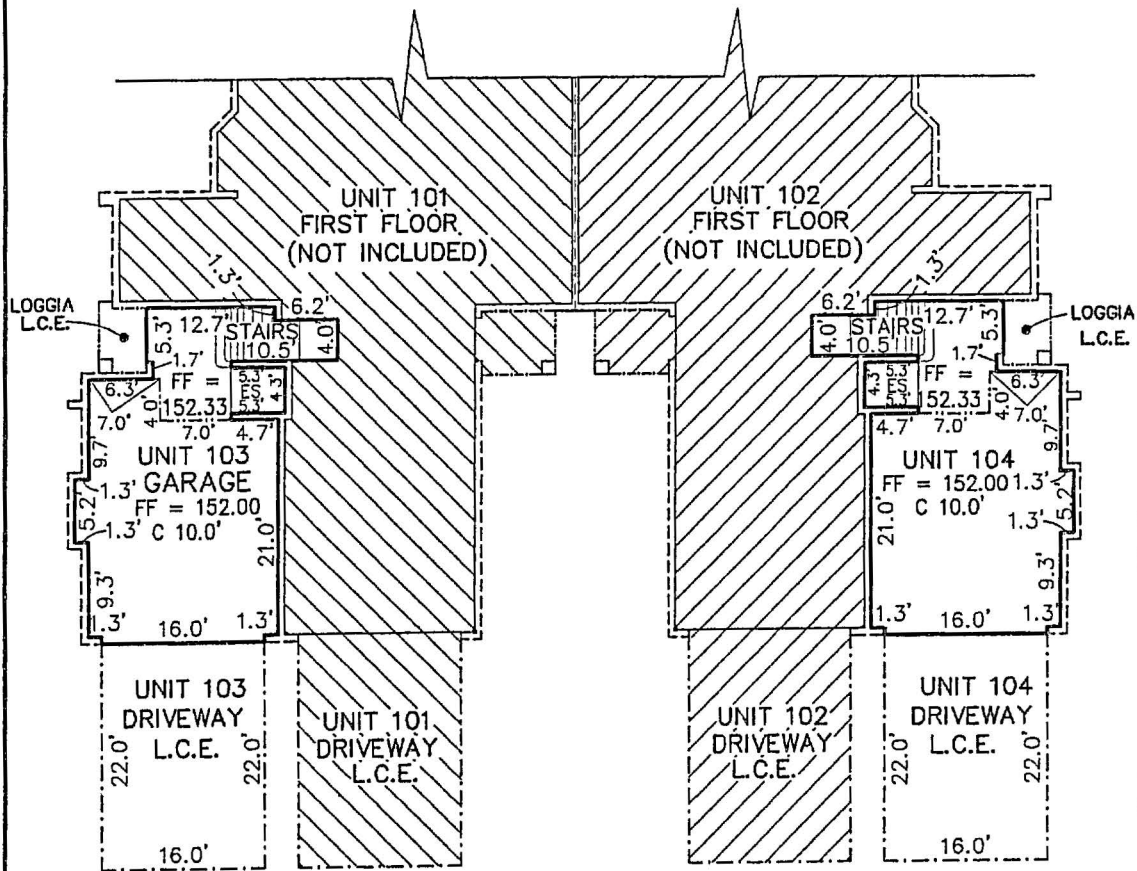
EXHIBIT "B"
MISSION CARMEL
A CONDOMINIUM

Section 26, Township 20 South, Range 25 East
Lake County, Florida, Town of Howey-in-the-Hills

SHEET 7 OF 51

BUILDING 100
UNITS 103 & 104
UNIT BOUNDARY

The quality of this image
is equivalent to the quality
of the original document.

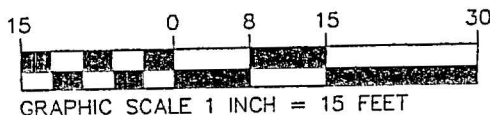


FIRST FLOOR PLAN

NOTE:
GARAGE AND STAIRS DEPICTED ABOVE ARE ASSOCIATED
WITH AND ARE APART OF THE SECOND FLOOR UNITS
ALL WALLS ARE 8" UNLESS OTHERWISE NOTED

LEGEND

- UNIT BOUNDARY LINE
- - - - BUILDING LINE
- - - - L.C.E. (LIMITED COMMON ELEMENT)
- - - - CEILING PARTITION
- FF FINISH FLOOR
- C HEIGHT OF UNFINISH CEILING



NOTE:
ALL WALLS ARE 8" UNLESS OTHERWISE NOTED

**FARNER
BAILEY**
AND ASSOCIATES, INC.
350 NORTH SINCLAIR AVENUE • TAVARES, FL 32778 • (352) 343-8481

- ▲ ENGINEERS
- ▲ SURVEYORS
- ▲ PLANNERS
- LB # 4709

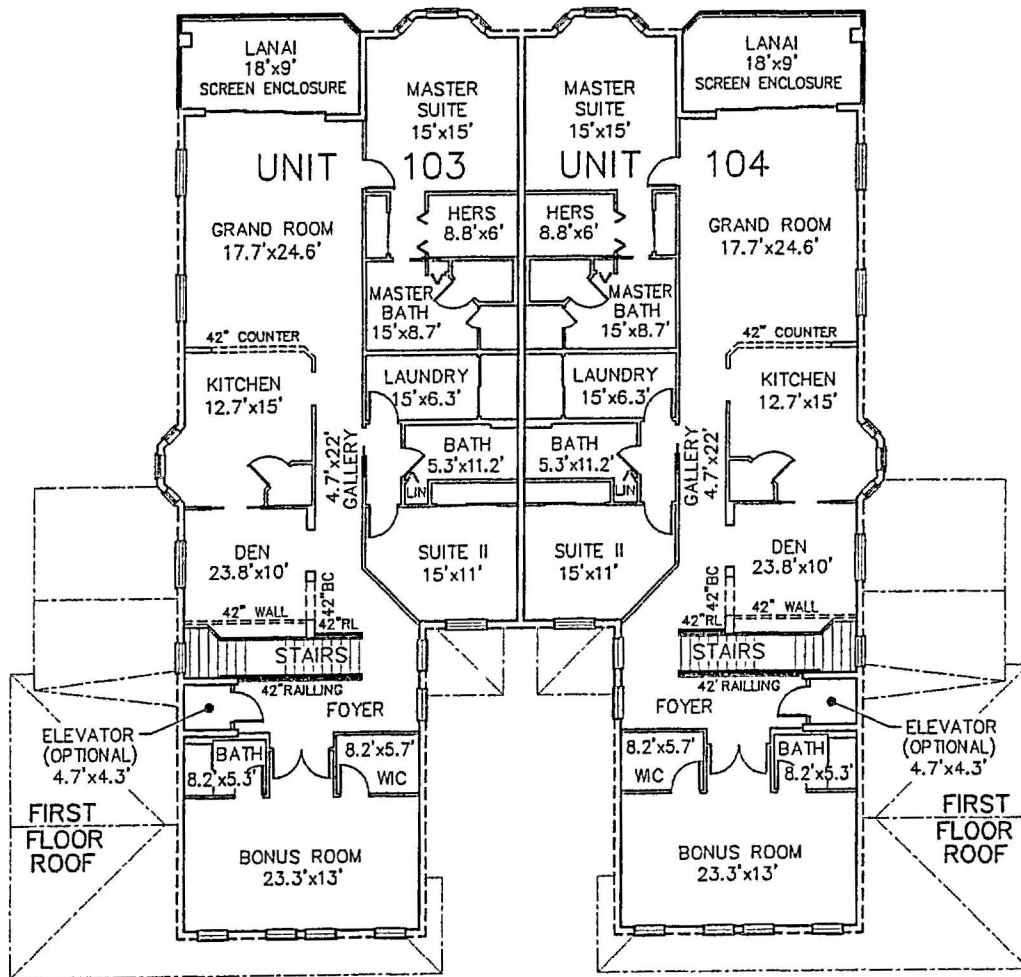
8/05/04

EXHIBIT "B"
MISSION CARMEL
A CONDOMINIUM

Section 26, Township 20 South, Range 25 East
Lake County, Florida, Town of Howey-in-the-Hills

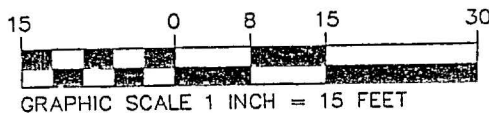
SHEET 8 OF 51

BUILDING 100
UNITS 103 & 104
INTERIOR WALLS



SECOND FLOOR PLAN

- LEGEND
- RL RAILING
 - BC BOOK CASE
 - LIN LINEN
 - WC WALK-IN CLOSET



FARNER BARLEY
AND ASSOCIATES, INC.
350 NORTH SINGLAR AVENUE • TAVARES, FL 32778 • (352) 343-8481

- ▲ ENGINEERS
- ▲ SURVEYORS
- ▲ PLANNERS
- LS # 4709

The quality of this image is equivalent to the quality of the original document.

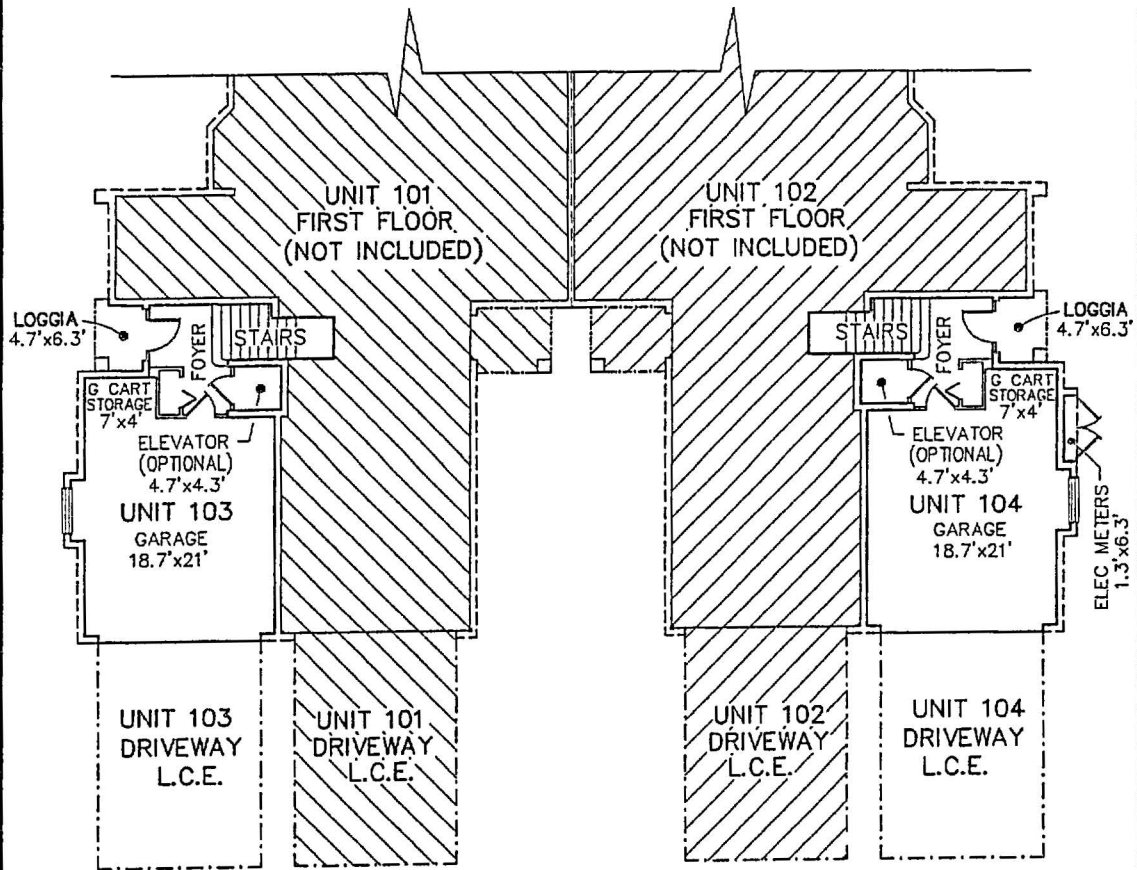
8/05/04

EXHIBIT "B"
MISSION CARMEL
A CONDOMINIUM

Section 26, Township 20 South, Range 25 East
Lake County, Florida, Town of Howey-in-the-Hills

SHEET 9 OF 51

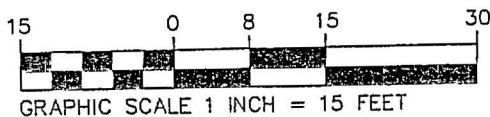
BUILDING 100
UNITS 103 & 104
INTERIOR WALLS



FIRST FLOOR PLAN

NOTE:
GARAGE AND STAIRS DEPICTED ABOVE ARE ASSOCIATED
WITH AND ARE APART OF THE SECOND FLOOR UNITS

LEGEND
ELEC ELECTRIC



**FARNER
BAILEY**
AND ASSOCIATES, INC.
350 NORTH SINGLAR AVENUE • TAVARES, FL 32778 • (352) 343-0481

- ▲ ENGINEERS
- ▲ SURVEYORS
- ▲ PLANNERS

LB # 4709

The quality of this image
is equivalent to the quality
of the original document.

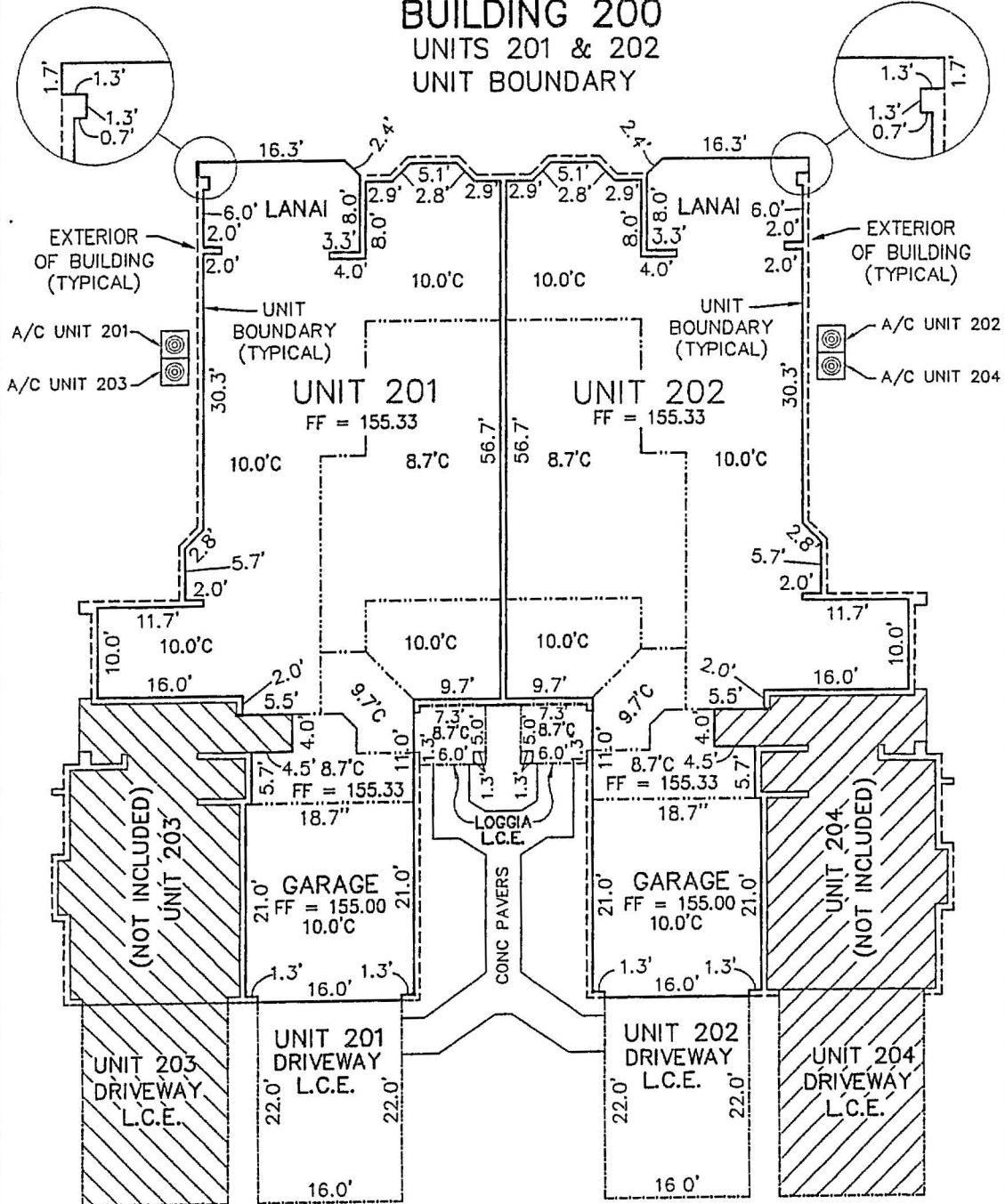
8/05/04

EXHIBIT "B"
MISSION CARMEL
A CONDOMINIUM

Section 26, Township 20 South, Range 25 East
Lake County, Florida, Town of Howey-in-the-Hills

SHEET 10 OF 51

BUILDING 200
UNITS 201 & 202
UNIT BOUNDARY



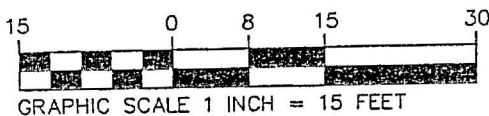
LEGEND

- UNIT BOUNDARY LINE
- - - BUILDING LINE
- - - L.C.E. (LIMITED COMMON ELEMENT)
- - - CEILING PARTITION
- FF FINISH FLOOR
- C HEIGHT OF UNFINISH CEILING
- A/C AIR CONDITIONAL

FIRST FLOOR PLAN



NOTE:
ALL WALLS ARE 8" UNLESS OTHERWISE NOTED



FARNER BARLEY
AND ASSOCIATES, INC.
18 # 4709
350 NORTH SINCLAIR AVENUE • TAVARES, FL 32778 • (352) 343-8481

- ▲ ENGINEERS
- ▲ SURVEYORS
- ▲ PLANNERS

The quality of this image is equivalent to the quality of the original document.

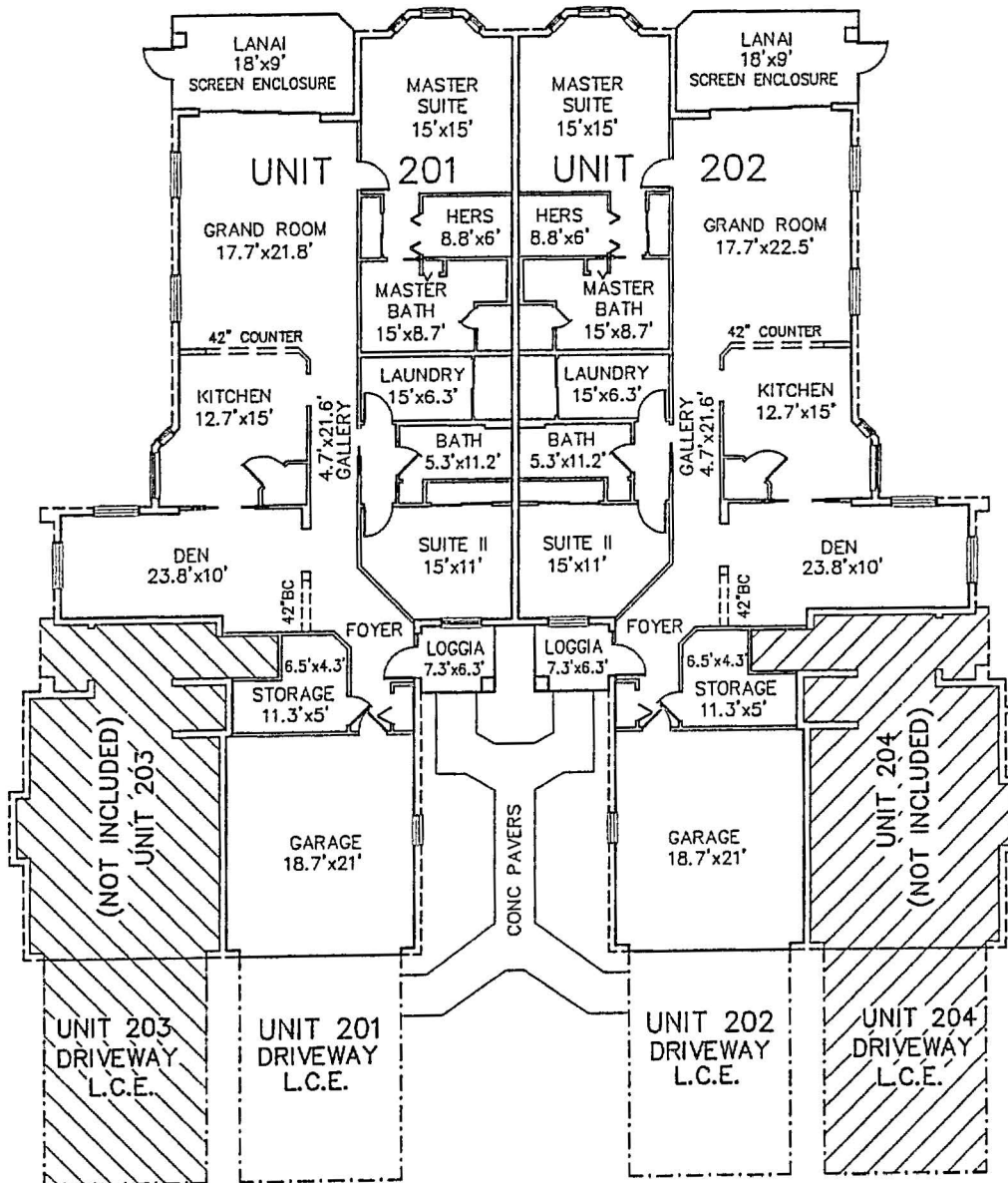
8/05/04

EXHIBIT "B"
MISSION CARMEL
A CONDOMINIUM

Section 26, Township 20 South, Range 25 East
Lake County, Florida, Town of Howey-in-the-Hills

SHEET 11 OF 51

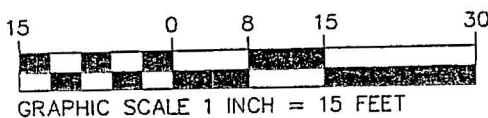
BUILDING 200
UNITS 201 & 202
INTERIOR WALLS



FIRST FLOOR PLAN

LEGEND

BC BOOK CASE



**FARNER
BARLEY**
AND ASSOCIATES, INC.
350 NORTH SINCLAIR AVENUE • TAVARES, FL 32778 • (352) 343-8481

- ▲ ENGINEERS
- ▲ SURVEYORS
- ▲ PLANNERS

LS # 4709

The quality of this image
is equivalent to the quality
of the original document.

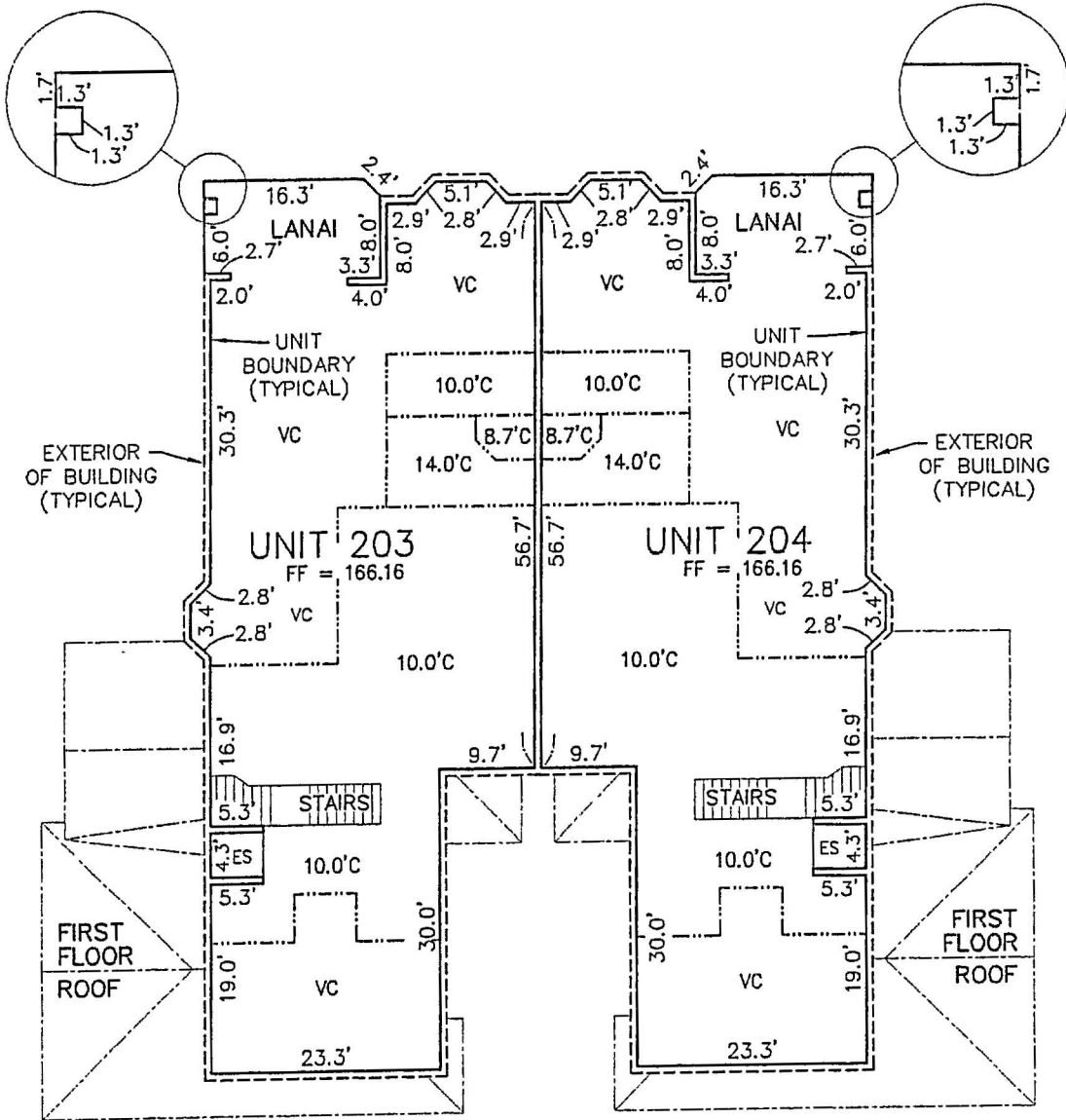
8/05/04

EXHIBIT "B"
MISSION CARMEL
A CONDOMINIUM

Section 26, Township 20 South, Range 25 East
Lake County, Florida, Town of Howey-in-the-Hills

SHEET 12 OF 51

BUILDING 200
UNITS 203 & 204
UNIT BOUNDARY



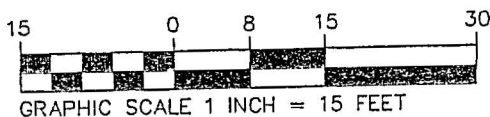
LEGEND

- UNIT BOUNDARY LINE
- - - - BUILDING LINE
- · - · L.C.E. (LIMITED COMMON ELEMENT)
- · - · CEILING PARTITION
- FF FINISH FLOOR
- C HEIGHT OF UNFINISH CEILING
- ES ELEVATOR SHAFT
- VC VAULTED CEILING

SECOND FLOOR PLAN



NOTE:
ALL WALLS ARE 8" UNLESS OTHERWISE NOTED



FARNER BARLEY
AND ASSOCIATES, INC.
350 NORTH SINCLAIR AVENUE • TAVARES FL 32778 • (352) 343-8481

- ▲ ENGINEERS
- ▲ SURVEYORS
- ▲ PLANNERS
- LB # 4700

The quality of this image is equivalent to the quality of the original document.

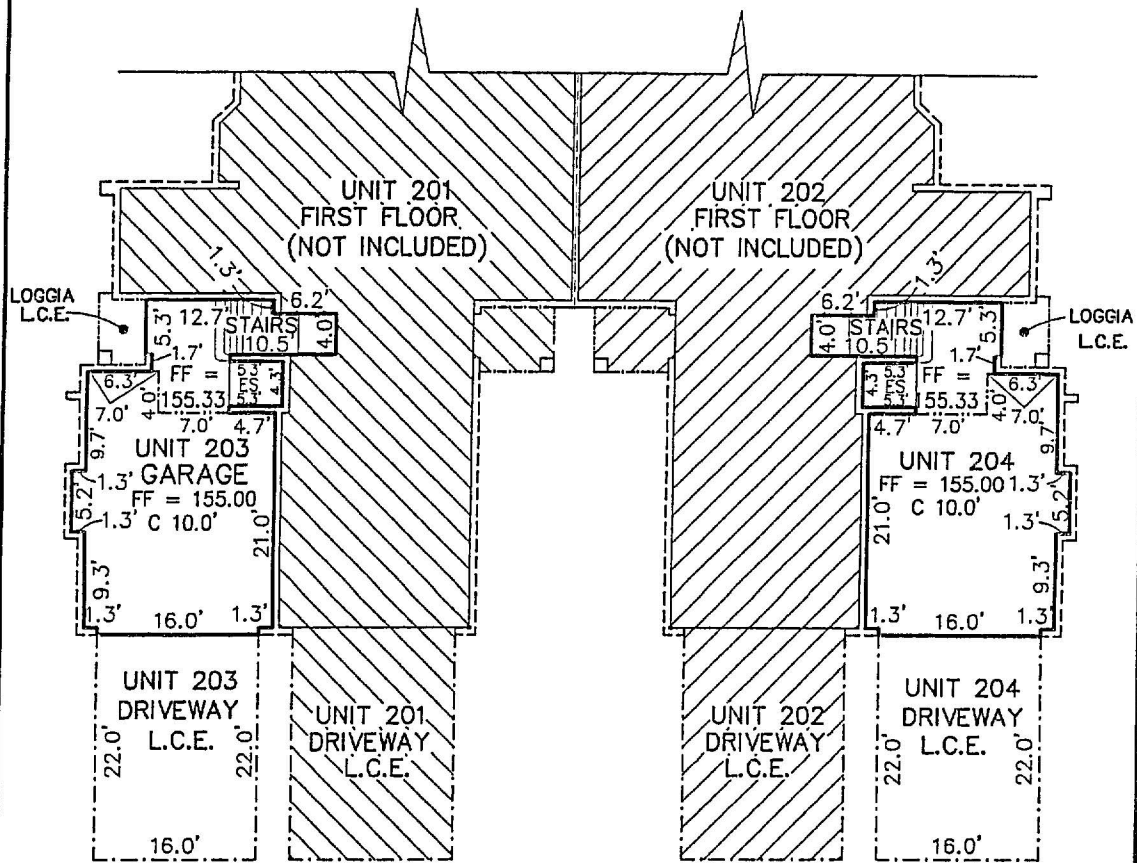
8/05/04

EXHIBIT "B"
MISSION CARMEL
A CONDOMINIUM

Section 26, Township 20 South, Range 25 East
Lake County, Florida, Town of Howey-in-the-Hills

SHEET 13 OF 51

BUILDING 200
UNITS 203 & 204
UNIT BOUNDARY

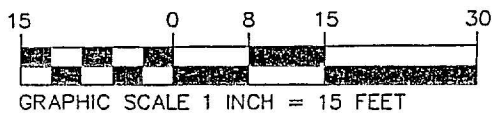


FIRST FLOOR PLAN

NOTE:
GARAGE AND STAIRS DEPICTED ABOVE ARE ASSOCIATED WITH AND ARE PART OF THE SECOND FLOOR UNITS
ALL WALLS ARE 8" UNLESS OTHERWISE NOTED

LEGEND

- UNIT BOUNDARY LINE
- BUILDING LINE
- L.C.E. (LIMITED COMMON ELEMENT)
- CEILING PARTITION
- FF FINISH FLOOR
- C HEIGHT OF UNFINISH CEILING



NOTE:
ALL WALLS ARE 8" UNLESS OTHERWISE NOTED

FARNER BARLEY
AND ASSOCIATES, INC.
330 NORTH SINCLAIR AVENUE • TAVARES, FL 32778 • (352) 343-8481

▲ ENGINEERS
▲ SURVEYORS
▲ PLANNERS
LB # 4709

The quality of this image is equivalent to the quality of the original document.

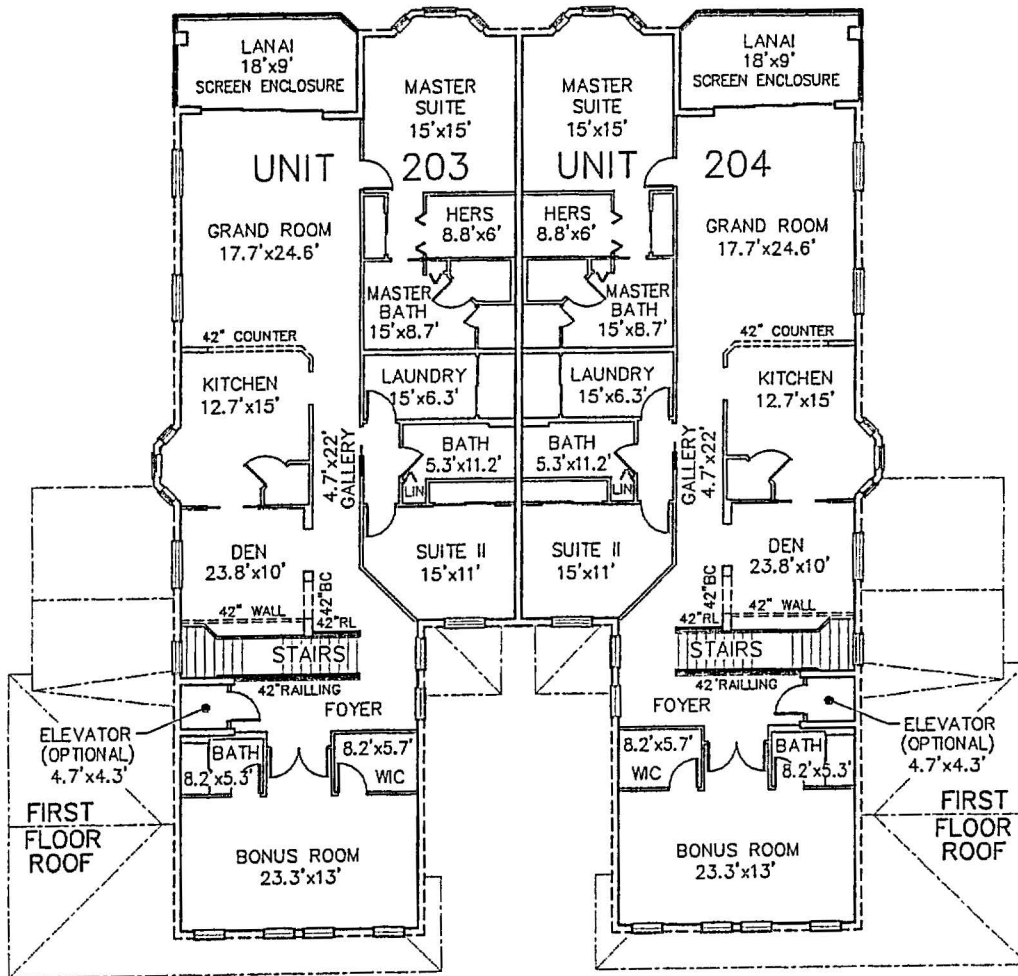
8/05/04

EXHIBIT "B"
MISSION CARMEL
A CONDOMINIUM

Section 26, Township 20 South, Range 25 East
Lake County, Florida, Town of Howey-in-the-Hills

SHEET 14 OF 51

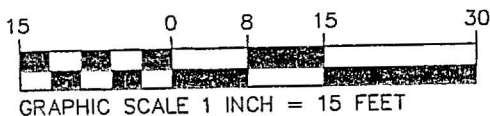
BUILDING 200
UNITS 203 & 204
INTERIOR WALLS



SECOND FLOOR PLAN

LEGEND

- RL RAILING
- BC BOOK CASE
- LIN LINEN
- WC WALK-IN CLOSET



FORNER BARLEY
AND ASSOCIATES, INC.
350 NORTH SINCLAIR AVENUE • TAVARES, FL 32778 • (352) 343-8481

- ▲ ENGINEERS
- ▲ SURVEYORS
- ▲ PLANNERS

LB # 4709

The quality of this image
is equivalent to the quality
of the original document.

8/05/04