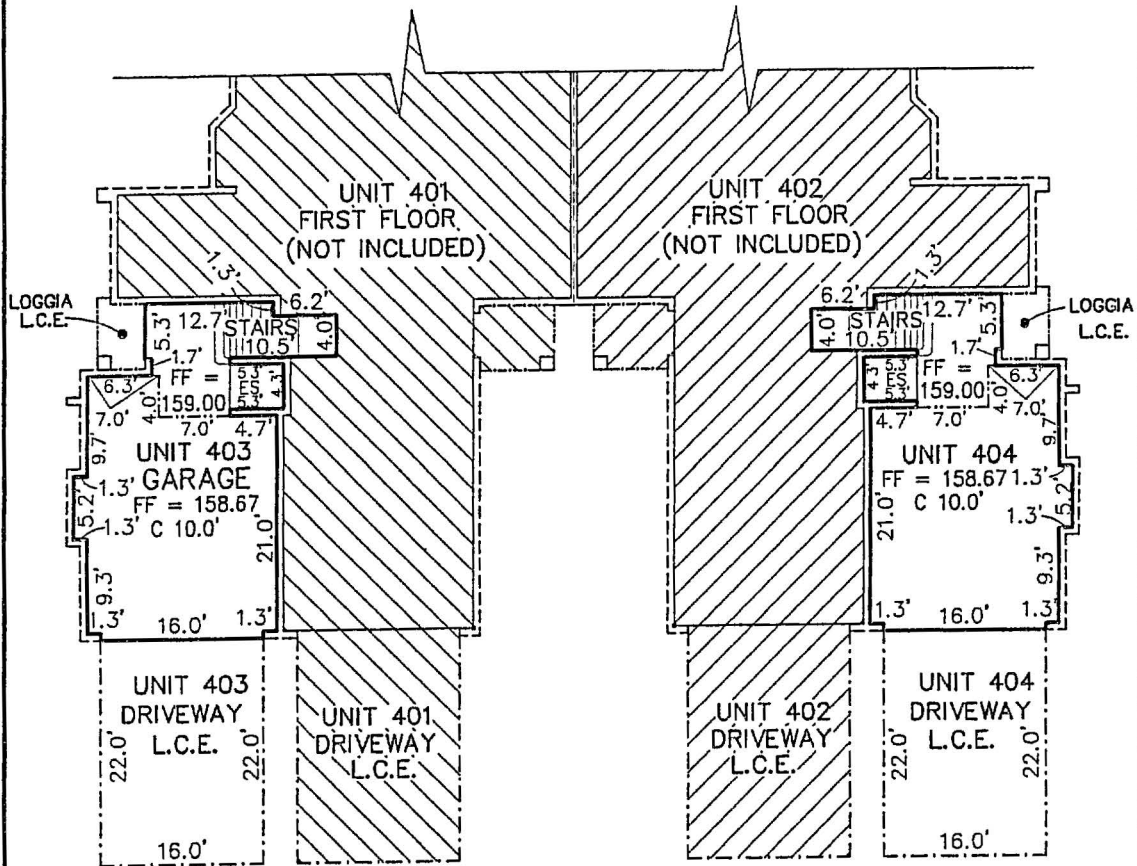


EXHIBIT "B"
MISSION CARMEL
A CONDOMINIUM

Section 26, Township 20 South, Range 25 East
Lake County, Florida, Town of Howey-in-the-Hills

SHEET 25 OF 51

BUILDING 400
UNITS 403 & 404
UNIT BOUNDARY



FIRST FLOOR PLAN

NOTE:
GARAGE AND STAIRS DEPICTED ABOVE ARE ASSOCIATED
WITH AND ARE APART OF THE SECOND FLOOR UNITS
ALL WALLS ARE 8" UNLESS OTHERWISE NOTED

LEGEND

- UNIT BOUNDARY LINE
- BUILDING LINE
- L.C.E. (LIMITED COMMON ELEMENT)
- CEILING PARTITION
- FF FINISH FLOOR
- C HEIGHT OF UNFINISH CEILING



NOTE:
ALL WALLS ARE 8" UNLESS OTHERWISE NOTED

**FARNER
BARLEY**
AND ASSOCIATES, INC.
350 NORTH SINCLAIR AVENUE • TAVARES, FL 32770 • (352) 343-8401

- ▲ ENGINEERS
- ▲ SURVEYORS
- ▲ PLANNERS
- LB # 4709

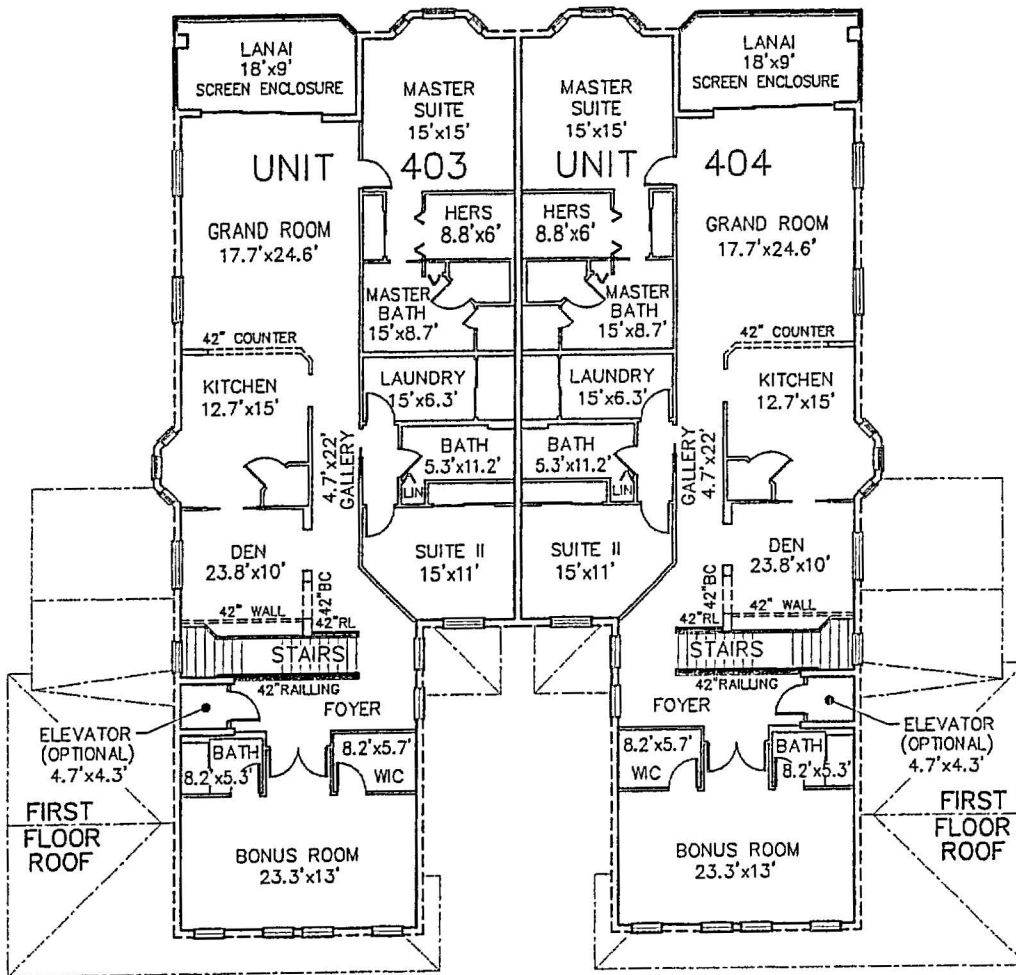
8/05/04

EXHIBIT "B"
MISSION CARMEL
A CONDOMINIUM

Section 26, Township 20 South, Range 25 East
Lake County, Florida, Town of Howey-in-the-Hills

SHEET 26 OF 51

BUILDING 400
UNITS 403 & 404
INTERIOR WALLS



SECOND FLOOR PLAN

LEGEND

- RL RAILING
- BC BOOK CASE
- LIN LINEN
- WIC WALK-IN CLOSET



**FARNER
BARLEY**
AND ASSOCIATES, INC.
350 NORTH SINCLAR AVENUE • TAVARES, FL 32778 • (352) 343-8481

- ▲ ENGINEERS
- ▲ SURVEYORS
- ▲ PLANNERS
- LB # 4709

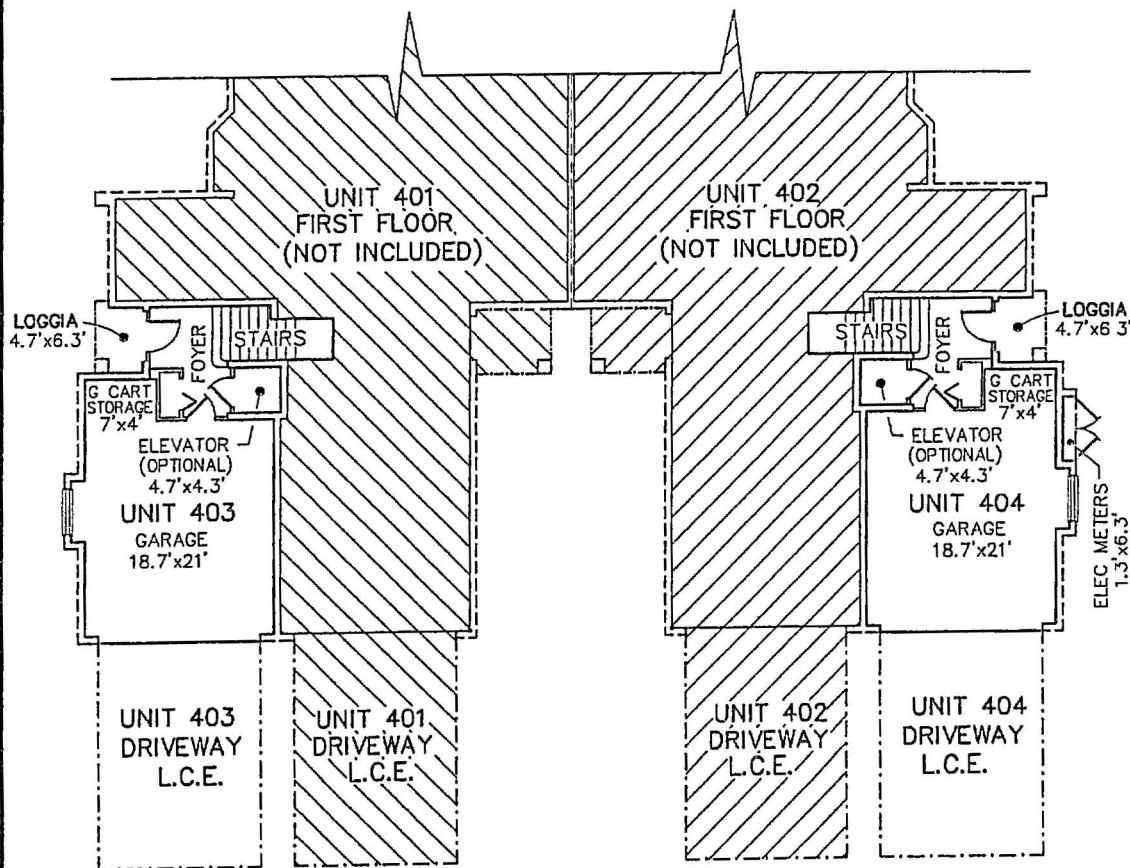
8/05/04

EXHIBIT "B"
MISSION CARMEL
A CONDOMINIUM

Section 26, Township 20 South, Range 25 East
Lake County, Florida, Town of Howey-in-the-Hills

SHEET 27 OF 51

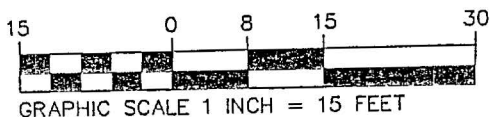
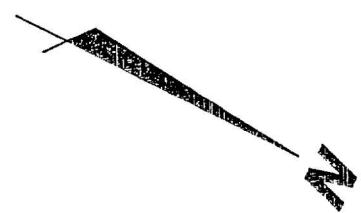
BUILDING 400
UNITS 403 & 404
INTERIOR WALLS



FIRST FLOOR PLAN

NOTE:
GARAGE AND STAIRS DEPICTED ABOVE ARE ASSOCIATED
WITH AND ARE APART OF THE SECOND FLOOR UNITS

LEGEND
ELEC ELECTRIC



**FARNER
BARLEY**
AND ASSOCIATES, INC.
350 NORTH SINCLAIR AVENUE • TAVARES, FL 32778 • (352) 343-5481

- ▲ ENGINEERS
- ▲ SURVEYORS
- ▲ PLANNERS
- LB # 4709

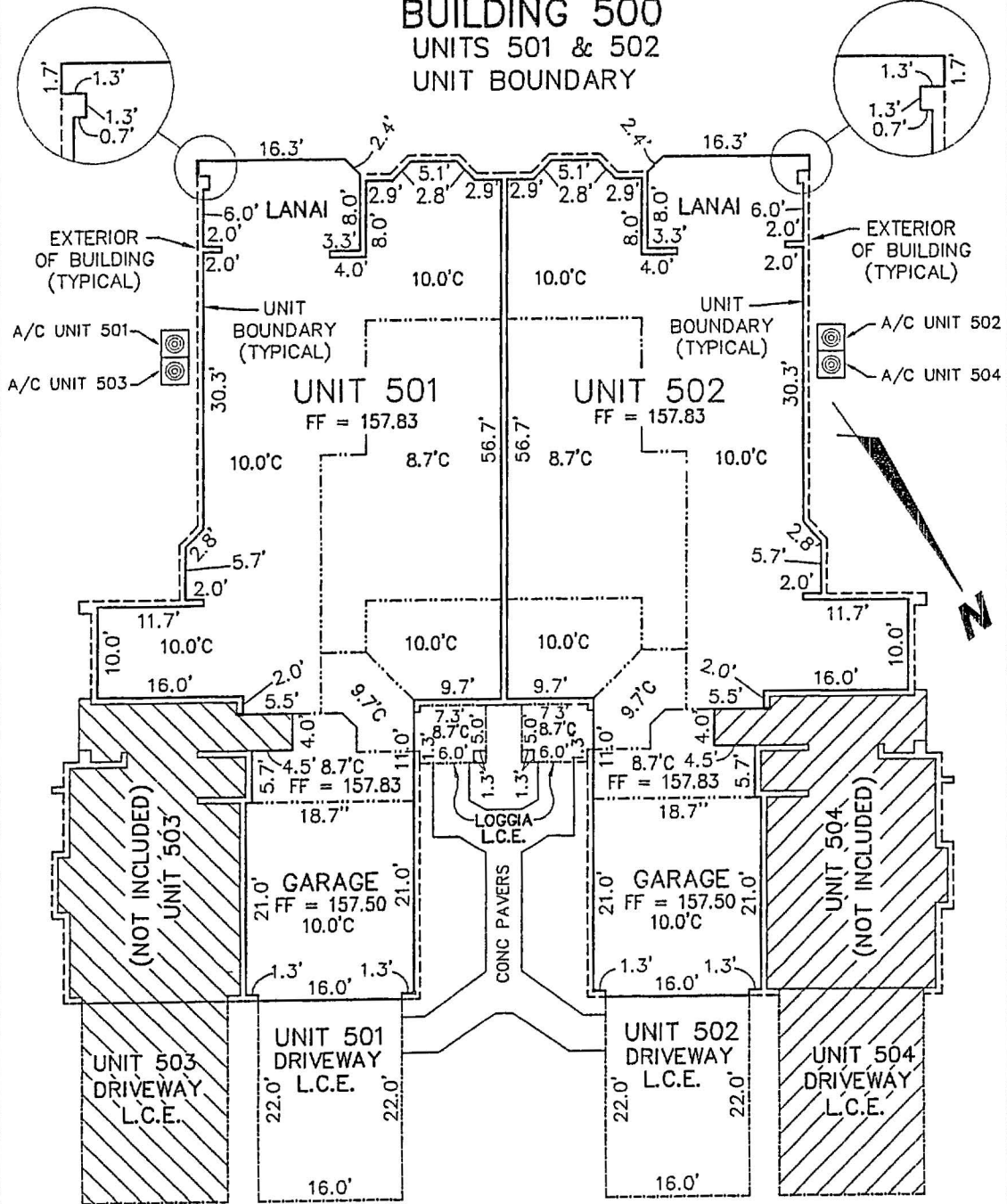
B/05/04

EXHIBIT "B"
MISSION CARMEL
A CONDOMINIUM

Section 26, Township 20 South, Range 25 East
Lake County, Florida, Town of Howey-in-the-Hills

SHEET 28 OF 51

BUILDING 500
UNITS 501 & 502
UNIT BOUNDARY



FIRST FLOOR PLAN

LEGEND

- UNIT BOUNDARY LINE
- - - BUILDING LINE
- - - L.C.E. (LIMITED COMMON ELEMENT)
- - - CEILING PARTITION
- FF FINISH FLOOR
- C HEIGHT OF UNFINISH CEILING
- A/C AIR CONDITIONAL

NOTE:

ALL WALLS ARE 8" UNLESS OTHERWISE NOTED



**FARNER
BARLEY**
AND ASSOCIATES, INC.

▲ ENGINEERS
▲ SURVEYORS
▲ PLANNERS

LS # 4709
350 NORTH SIMPLAR AVENUE ▲ TAVARES, FL 32778 ▲ (352) 343-8481

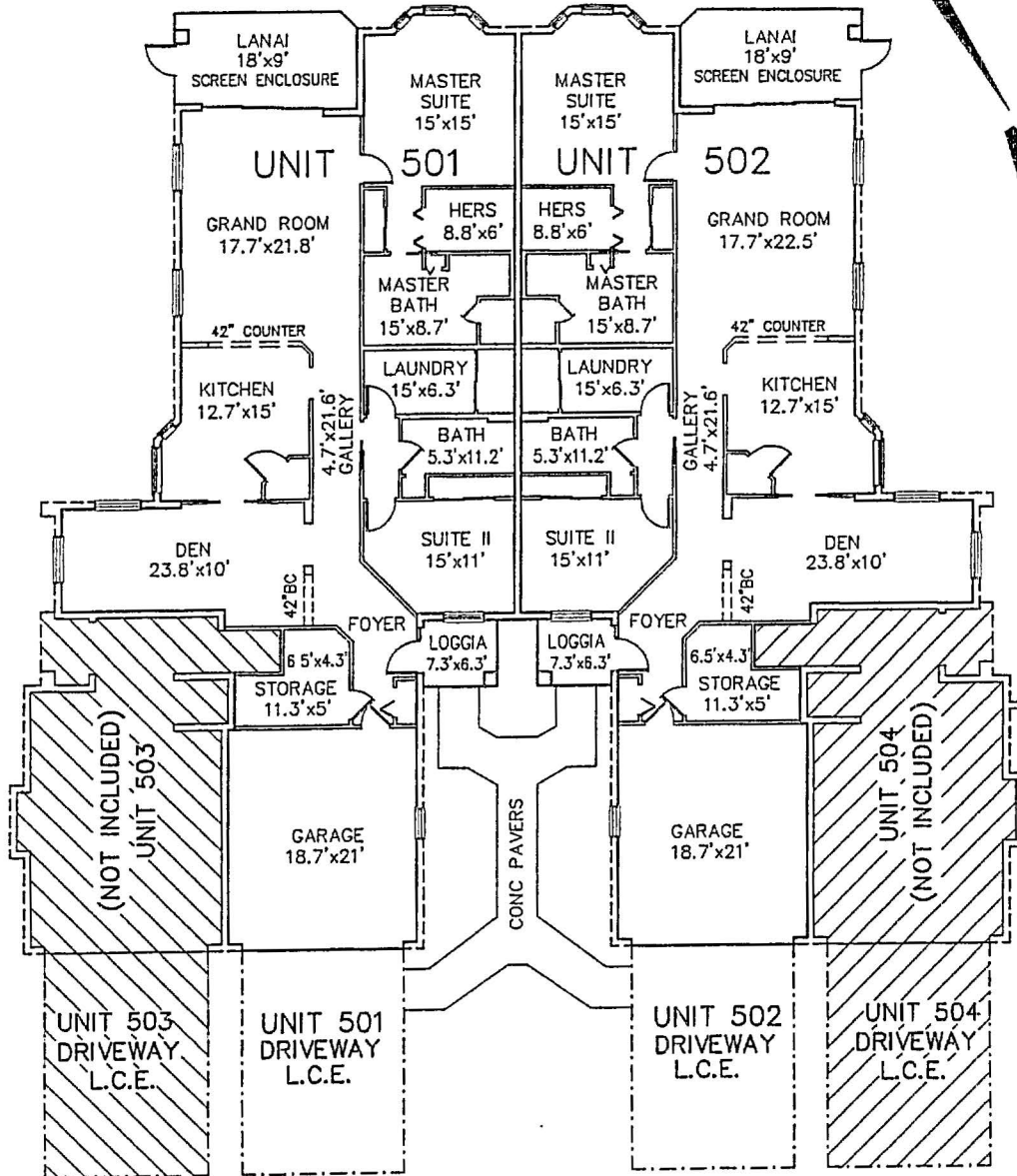
8/05/04

EXHIBIT "B"
MISSION CARMEL
A CONDOMINIUM

Section 26, Township 20 South, Range 25 East
Lake County, Florida, Town of Howey-in-the-Hills

SHEET 29 OF 51

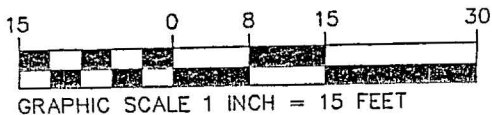
BUILDING 500
UNITS 501 & 502
INTERIOR WALLS



FIRST FLOOR PLAN

LEGEND

BC BOOK CASE



**FARNER
BARLEY**
AND ASSOCIATES, INC.

▲ ENGINEERS
▲ SURVEYORS
▲ PLANNERS
LB # 4799

350 NORTH SINCLAIR AVENUE ▲ TAVARES, FL 32778 ▲ (352) 343-8481

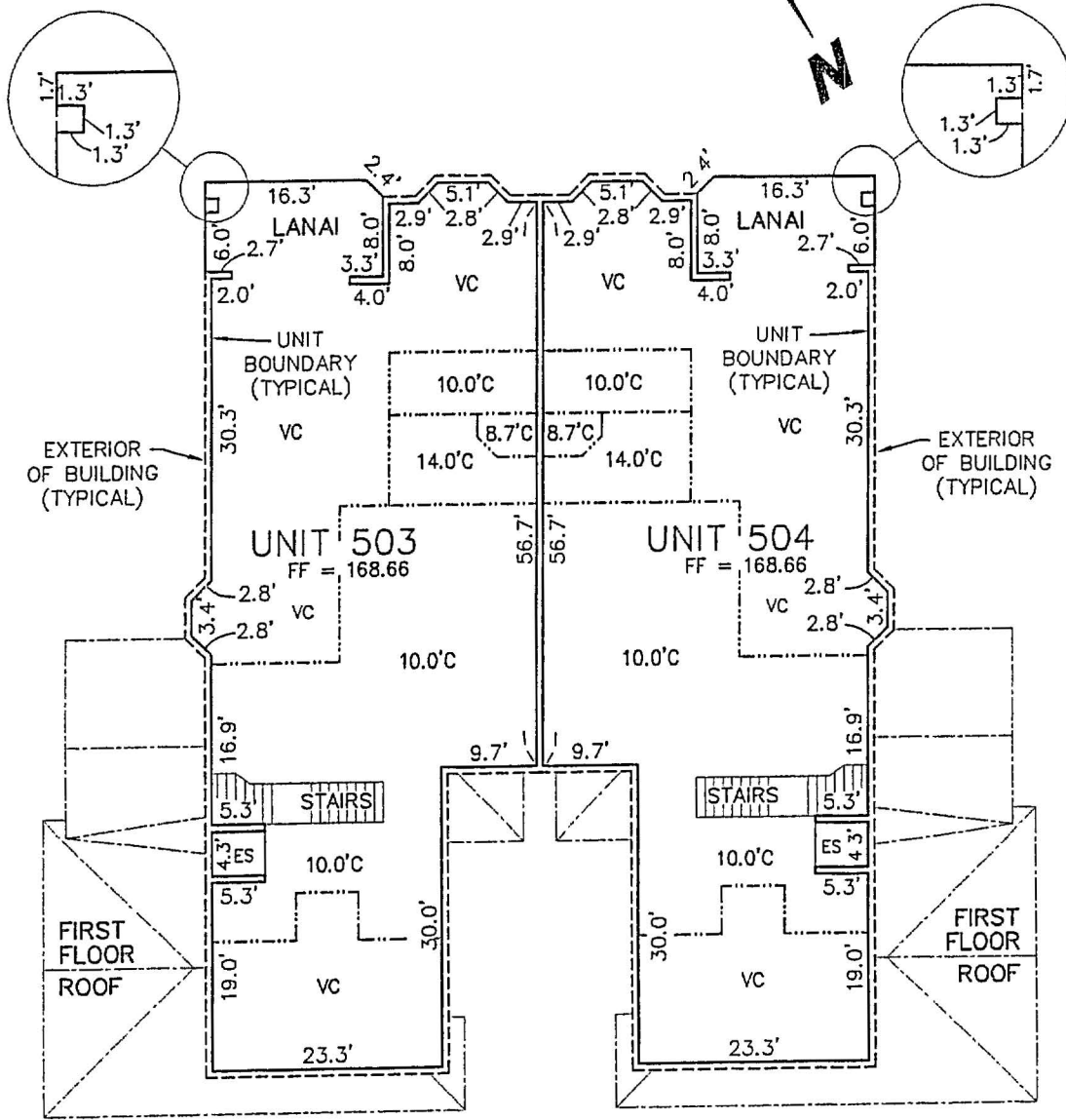
8/05/04

EXHIBIT "B"
MISSION CARMEL
A CONDOMINIUM

Section 26, Township 20 South, Range 25 East
Lake County, Florida, Town of Howey-in-the-Hills

SHEET 30 OF 51

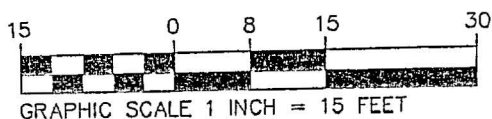
BUILDING 500
UNITS 503 & 504
UNIT BOUNDARY



LEGEND SECOND FLOOR PLAN

- UNIT BOUNDARY LINE
- BUILDING LINE
- L.C.E. (LIMITED COMMON ELEMENT)
- CEILING PARTITION
- FF FINISH FLOOR
- C HEIGHT OF UNFINISH CEILING
- ES ELEVATOR SHAFT
- VC VAULTED CEILING

NOTE:
ALL WALLS ARE 8" UNLESS OTHERWISE NOTED



FARNER BARLEY
AND ASSOCIATES, INC.
350 NORTH SHILOH AVENUE • TAVARES, FL 32778 • (352) 343-8481

- ▲ ENGINEERS
- ▲ SURVEYORS
- ▲ PLANNERS

LS # 4708

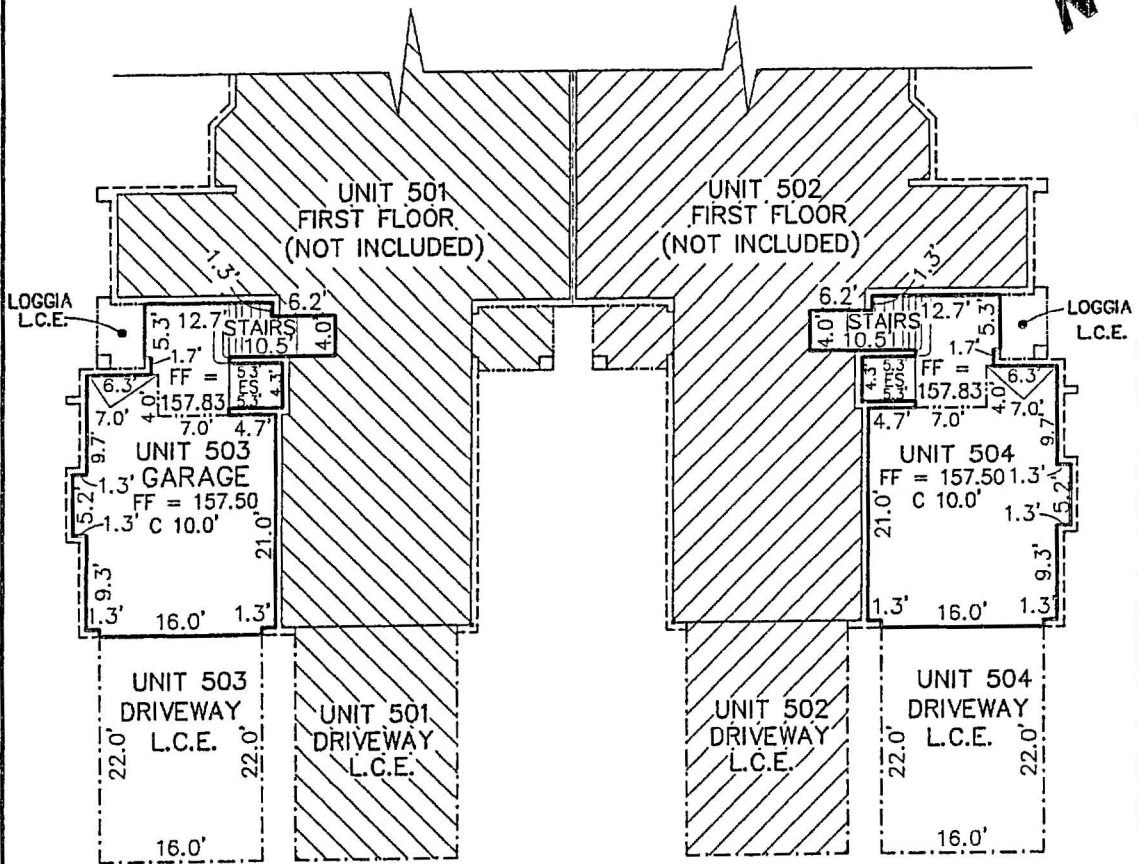
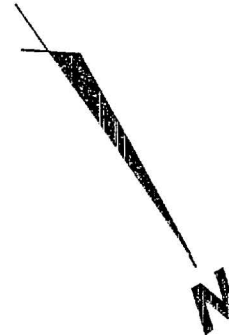
8/05/04

EXHIBIT "B"
MISSION CARMEL
A CONDOMINIUM

Section 26, Township 20 South, Range 25 East
Lake County, Florida, Town of Howey-in-the-Hills

SHEET 31 OF 51

BUILDING 500
UNITS 503 & 504
UNIT BOUNDARY

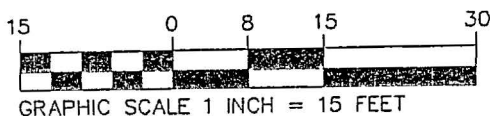


FIRST FLOOR PLAN

NOTE:
GARAGE AND STAIRS DEPICTED ABOVE ARE ASSOCIATED WITH AND ARE PART OF THE SECOND FLOOR UNITS
ALL WALLS ARE 8" UNLESS OTHERWISE NOTED

LEGEND

- UNIT BOUNDARY LINE
- BUILDING LINE
- L.C.E. (LIMITED COMMON ELEMENT)
- CEILING PARTITION
- FF FINISH FLOOR
- C HEIGHT OF UNFINISH CEILING



NOTE:
ALL WALLS ARE 8" UNLESS OTHERWISE NOTED

FARNER BARLEY
AND ASSOCIATES, INC.

▲ ENGINEERS
▲ SURVEYORS
▲ PLANNERS

LB # 4709
350 NORTH SINCLAIR AVENUE ▲ TAVARES, FL 32778 ▲ (352) 343-8461

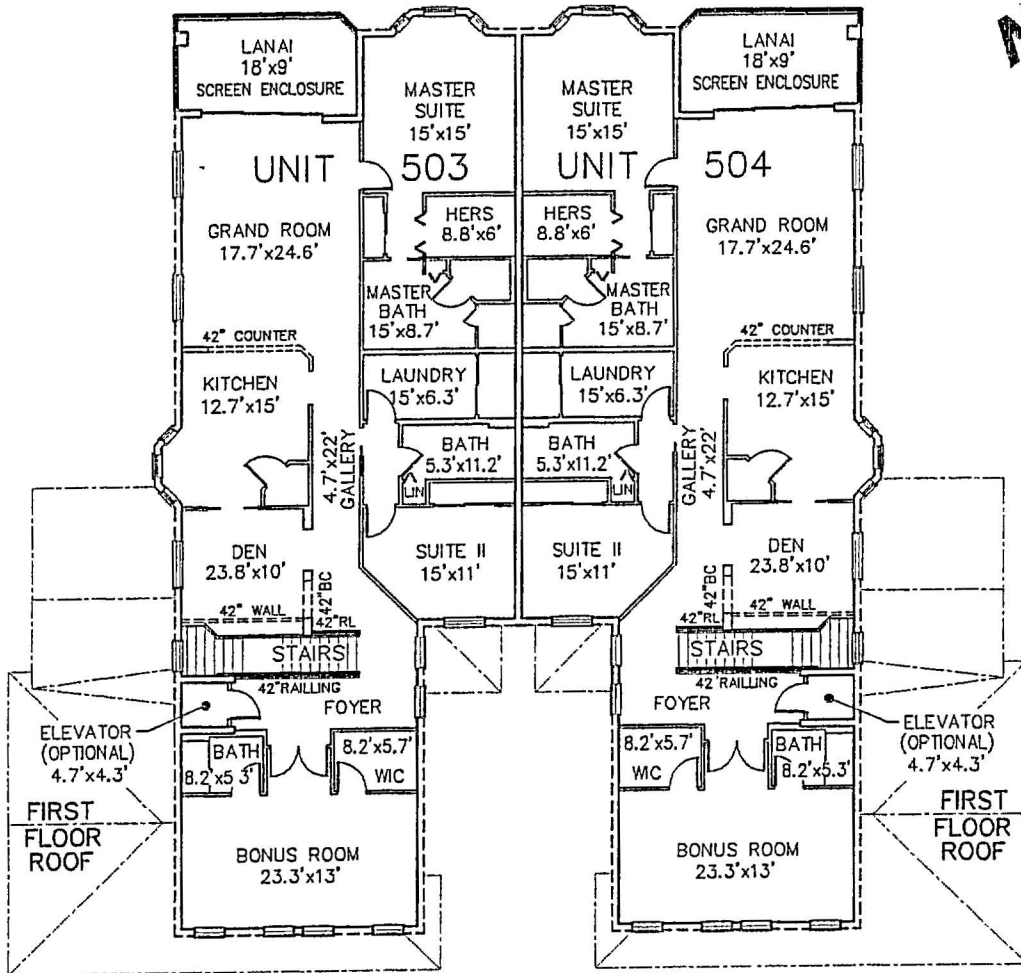
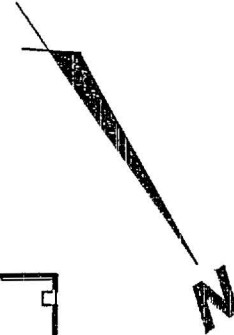
8/05/04

EXHIBIT "B"
MISSION CARMEL
A CONDOMINIUM

Section 26, Township 20 South, Range 25 East
Lake County, Florida, Town of Howey-in-the-Hills

SHEET 32 OF 51

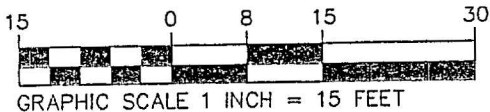
BUILDING 500
UNITS 503 & 504
INTERIOR WALLS



SECOND FLOOR PLAN

LEGEND

- RL RAILING
- BC BOOK CASE
- LIN LINEN
- WIC WALK-IN CLOSET



**FARNER
BARLEY**
AND ASSOCIATES, INC.

▲ ENGINEERS
▲ SURVEYORS
▲ PLANNERS

LP # 4709
350 NORTH SINCLAIR AVENUE ▲ TAVARES, FL 32778 ▲ (352) 343-8481

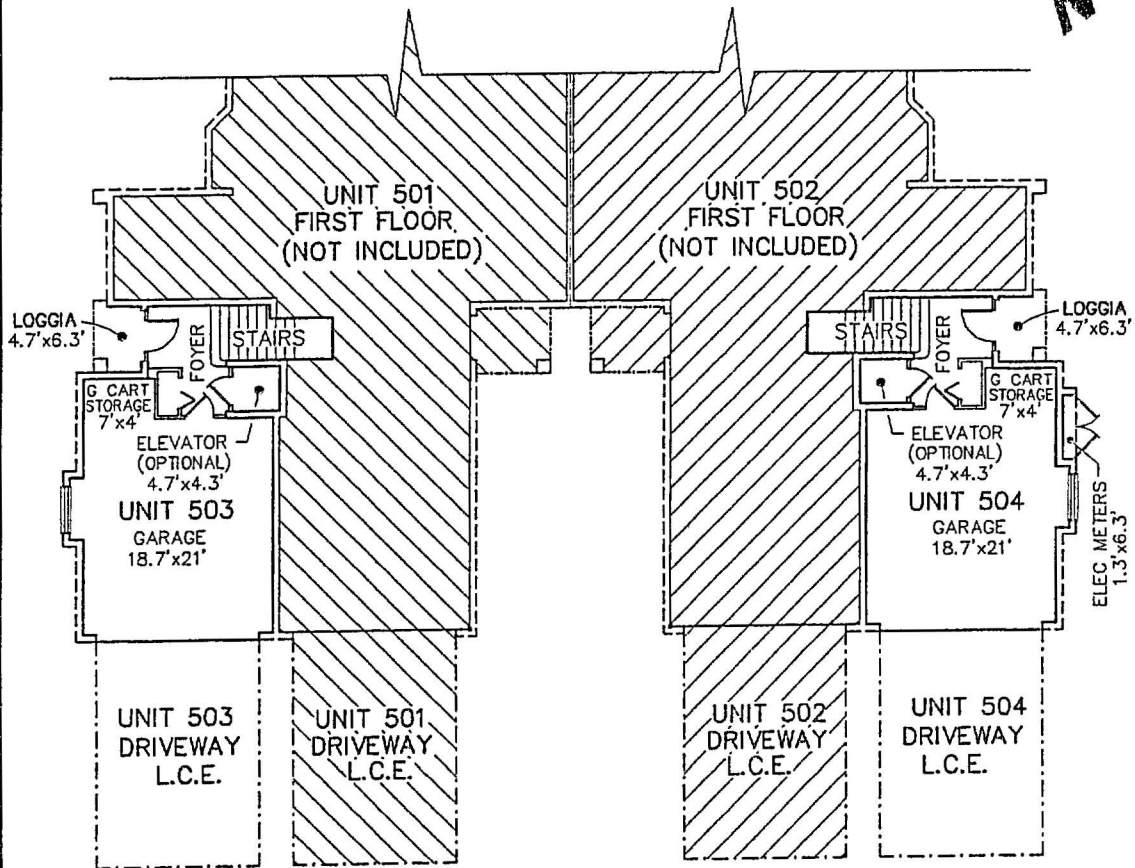
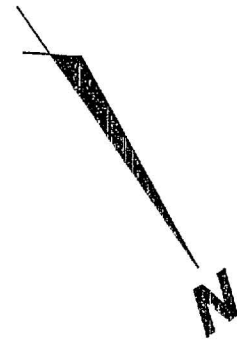
8/05/04

EXHIBIT "B"
MISSION CARMEL
A CONDOMINIUM

Section 26, Township 20 South, Range 25 East
Lake County, Florida, Town of Howey-in-the-Hills

SHEET 33 OF 51

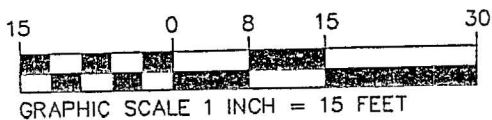
BUILDING 500
UNITS 503 & 504
INTERIOR WALLS



FIRST FLOOR PLAN

NOTE:
GARAGE AND STAIRS DEPICTED ABOVE ARE ASSOCIATED
WITH AND ARE APART OF THE SECOND FLOOR UNITS

LEGEND
ELEC ELECTRIC



**FARNER
BARLEY**
AND ASSOCIATES, INC.
LS # 4709
350 NORTH SHILAH AVENUE • TAVARES, FL 32778 • (352) 343-8481

- ▲ ENGINEERS
- ▲ SURVEYORS
- ▲ PLANNERS

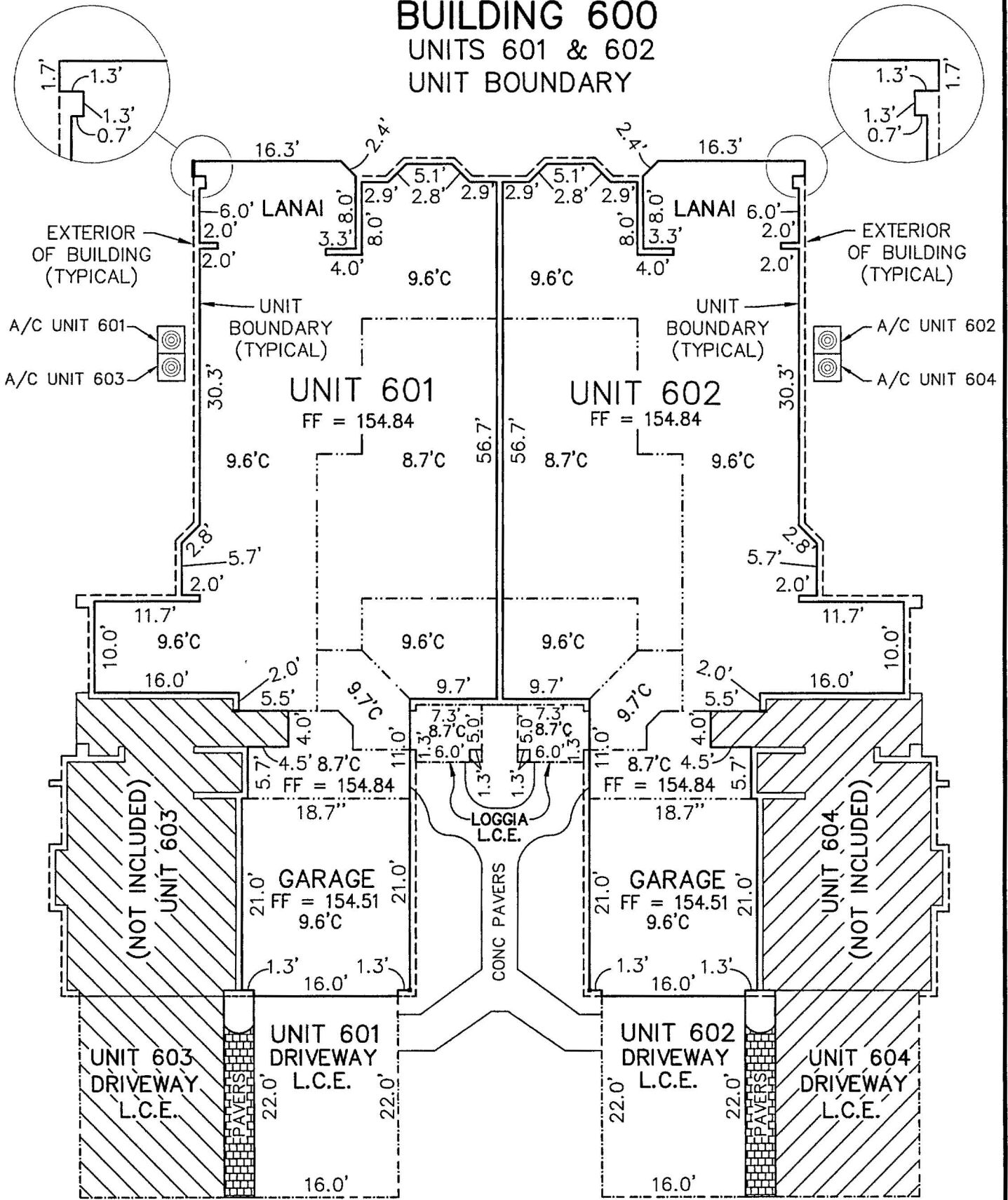
8/05/04

EXHIBIT "B"
MISSION CARMEL
A CONDOMINIUM

Section 26, Township 20 South, Range 25 East
 Lake County, Florida, Town of Howey-in-the-Hills

SHEET 34 OF 51

BUILDING 600
 UNITS 601 & 602
 UNIT BOUNDARY



LEGEND

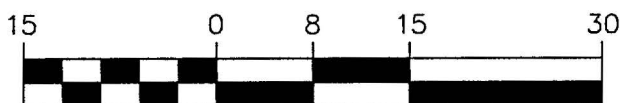
- UNIT BOUNDARY LINE
- BUILDING LINE
- - - - L.C.E. (LIMITED COMMON ELEMENT)
- CEILING PARTITION
- FF FINISH FLOOR
- C HEIGHT OF UNFINISH CEILING
- A/C AIR CONDITIONAL

FIRST FLOOR PLAN



NOTE:

ALL WALLS ARE 8" UNLESS OTHERWISE NOTED



GRAPHIC SCALE 1 INCH = 15 FEET

**FARNER
BARLEY**
AND ASSOCIATES, INC.

▲ ENGINEERS
 ▲ SURVEYORS
 ▲ PLANNERS

LB # 4709

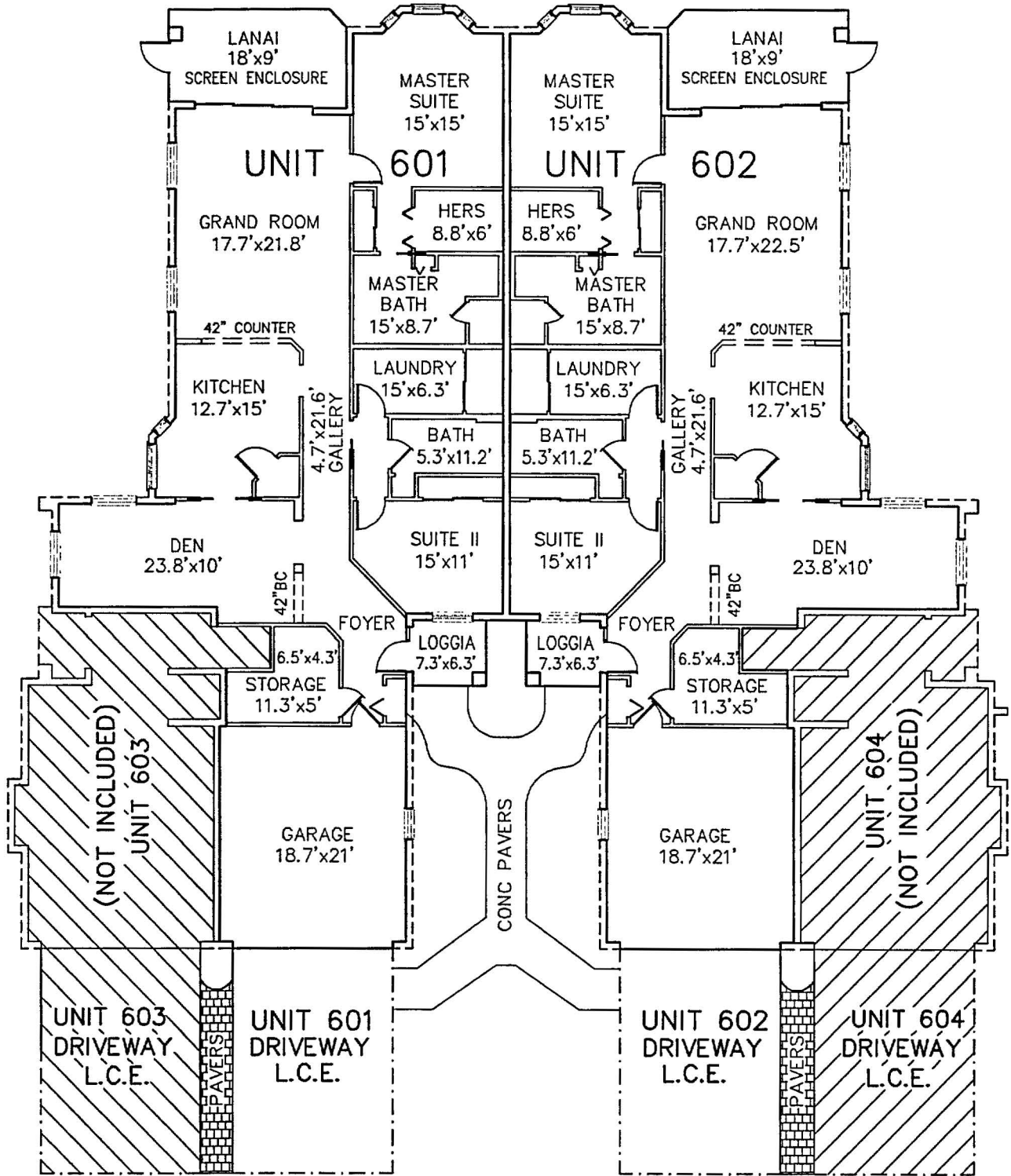
350 NORTH SINCLAIR AVENUE ▲ TAVARES, FL 32778 ▲ (352) 343-8481

EXHIBIT "B"
MISSION CARMEL
- A CONDOMINIUM

Section 26, Township 20 South, Range 25 East
Lake County, Florida, Town of Howey-in-the-Hills

SHEET 35 OF 51

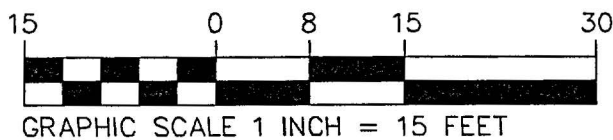
BUILDING 600
UNITS 601 & 602
INTERIOR WALLS



FIRST FLOOR PLAN

LEGEND

BC BOOK CASE



FARNER BARLEY
AND ASSOCIATES, INC.
350 NORTH SINCLAIR AVENUE • TAVARES, FL 32778 • (352) 343-8481

- ▲ ENGINEERS
- ▲ SURVEYORS
- ▲ PLANNERS

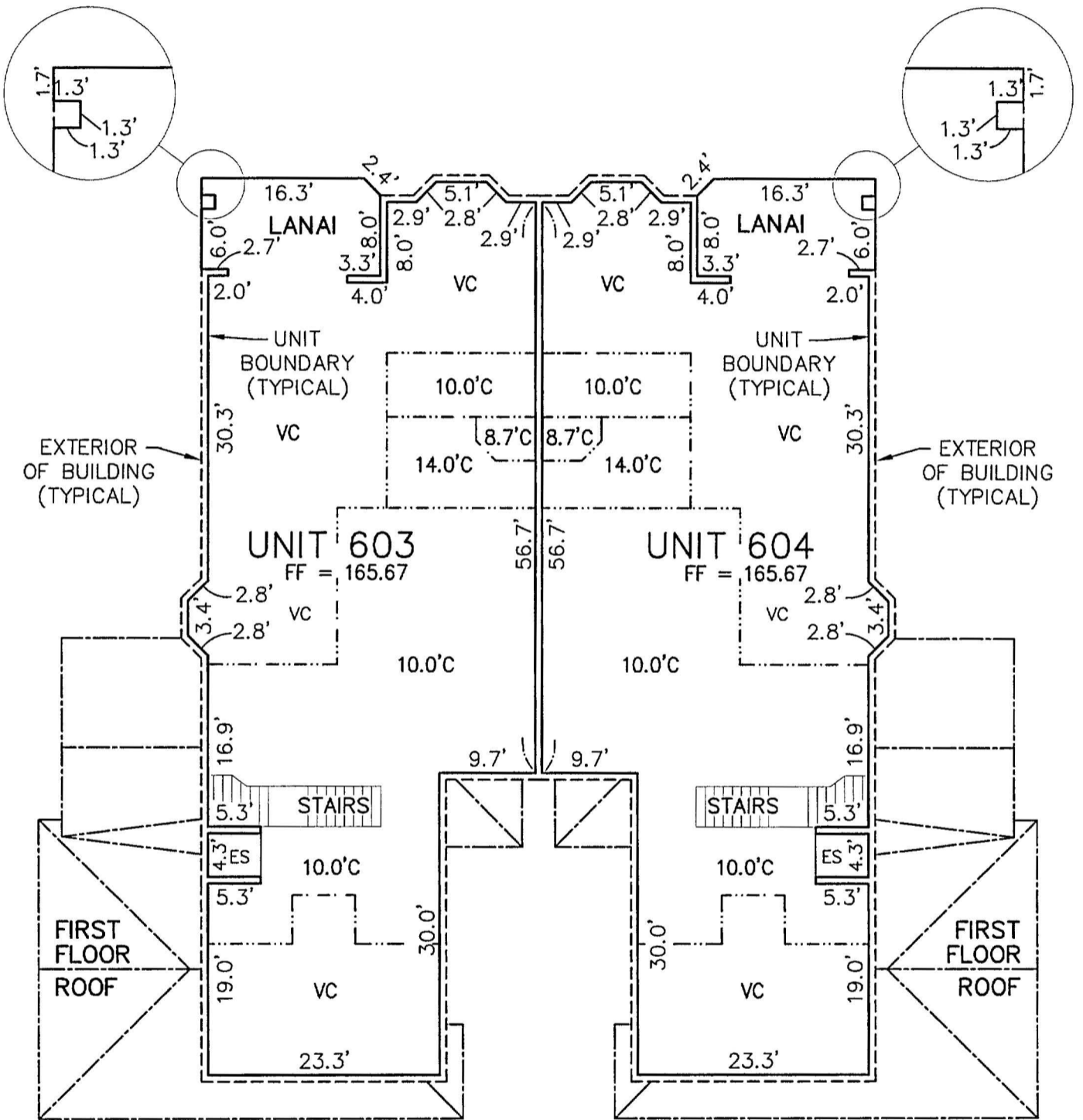
LB # 4709

EXHIBIT "B"
MISSION CARMEL
A CONDOMINIUM

Section 26, Township 20 South, Range 25 East
 Lake County, Florida, Town of Howey-in-the-Hills

SHEET 36 OF 51

BUILDING 600
 UNITS 603 & 604
 UNIT BOUNDARY



LEGEND

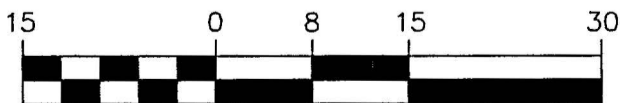
- UNIT BOUNDARY LINE
- BUILDING LINE
- L.C.E. (LIMITED COMMON ELEMENT)
- CEILING PARTITION
- FF FINISH FLOOR
- C HEIGHT OF UNFINISH CEILING
- ES ELEVATOR SHAFT
- VC VAULTED CEILING

SECOND FLOOR PLAN



NOTE:

ALL WALLS ARE 8" UNLESS OTHERWISE NOTED



GRAPHIC SCALE 1 INCH = 15 FEET


**FARNER
 BARLEY**
 AND ASSOCIATES, INC.
350 NORTH SINCLAIR AVENUE • TAVARES, FL 32778 • (352) 343-8481

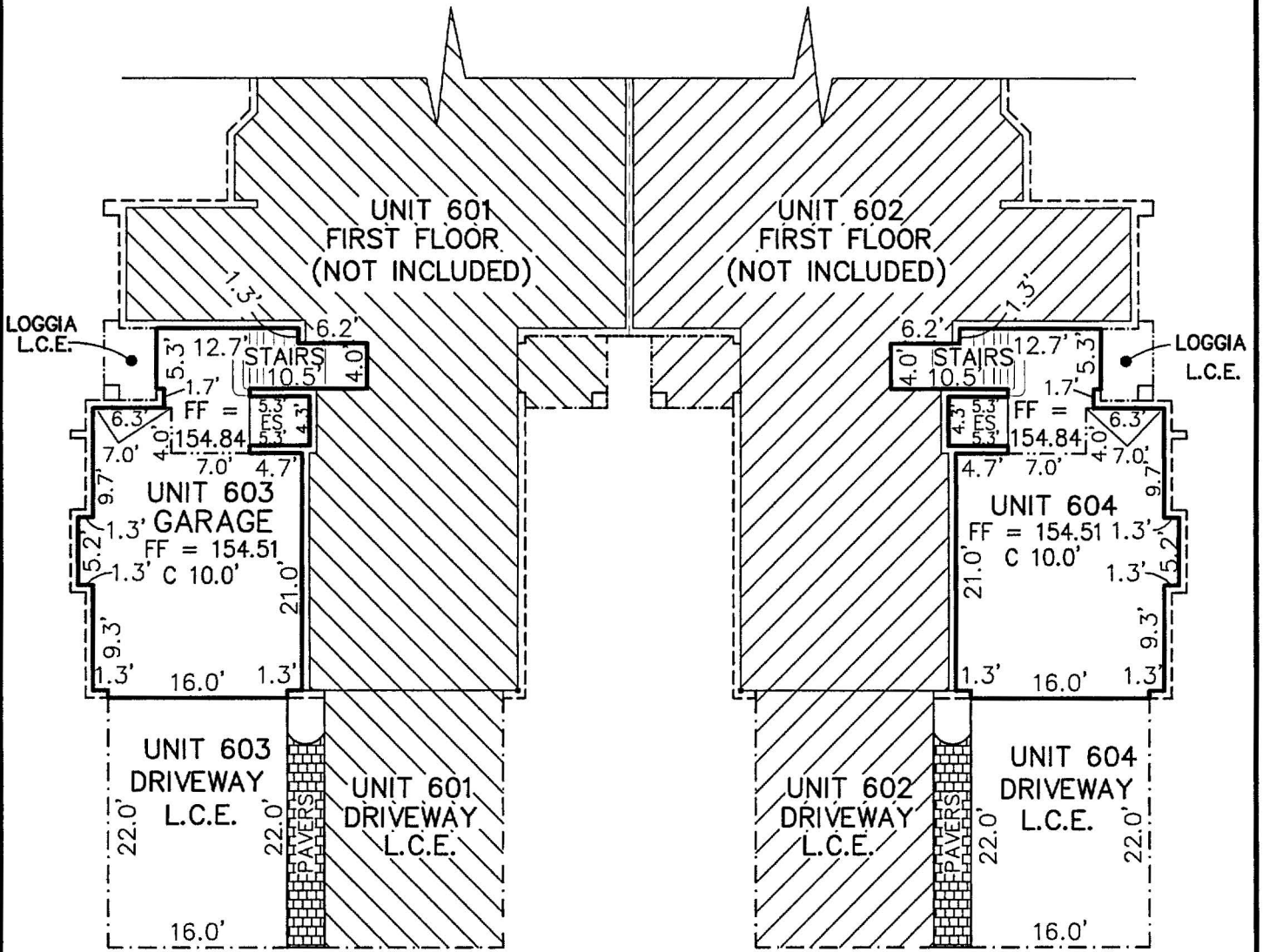
▲ ENGINEERS
 ▲ SURVEYORS
 ▲ PLANNERS
LB # 4709

EXHIBIT "B"
MISSION CARMEL
A CONDOMINIUM

Section 26, Township 20 South, Range 25 East
 Lake County, Florida, Town of Howey-in-the-Hills

SHEET 37 OF 51

BUILDING 600
 UNITS 603 & 604
 UNIT BOUNDARY

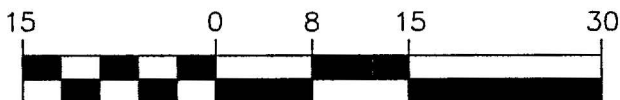


FIRST FLOOR PLAN

NOTE:
 GARAGE AND STAIRS DEPICTED ABOVE ARE ASSOCIATED WITH AND ARE APART OF THE SECOND FLOOR UNITS
 ALL WALLS ARE 8" UNLESS OTHERWISE NOTED

LEGEND

- UNIT BOUNDARY LINE
- - - - BUILDING LINE
- · - · - L.C.E. (LIMITED COMMON ELEMENT)
- · - · - CEILING PARTITION
- FF FINISH FLOOR
- C HEIGHT OF UNFINISH CEILING
- ES ELEVATOR SHAFT



GRAPHIC SCALE 1 INCH = 15 FEET



NOTE:
 ALL WALLS ARE 8" UNLESS OTHERWISE NOTED



**FARNER
BARLEY**
AND ASSOCIATES, INC.

350 NORTH SINCLAIR AVENUE ▲ TAVARES FL 32778 ▲ (352) 343-8481

- ▲ ENGINEERS
- ▲ SURVEYORS
- ▲ PLANNERS

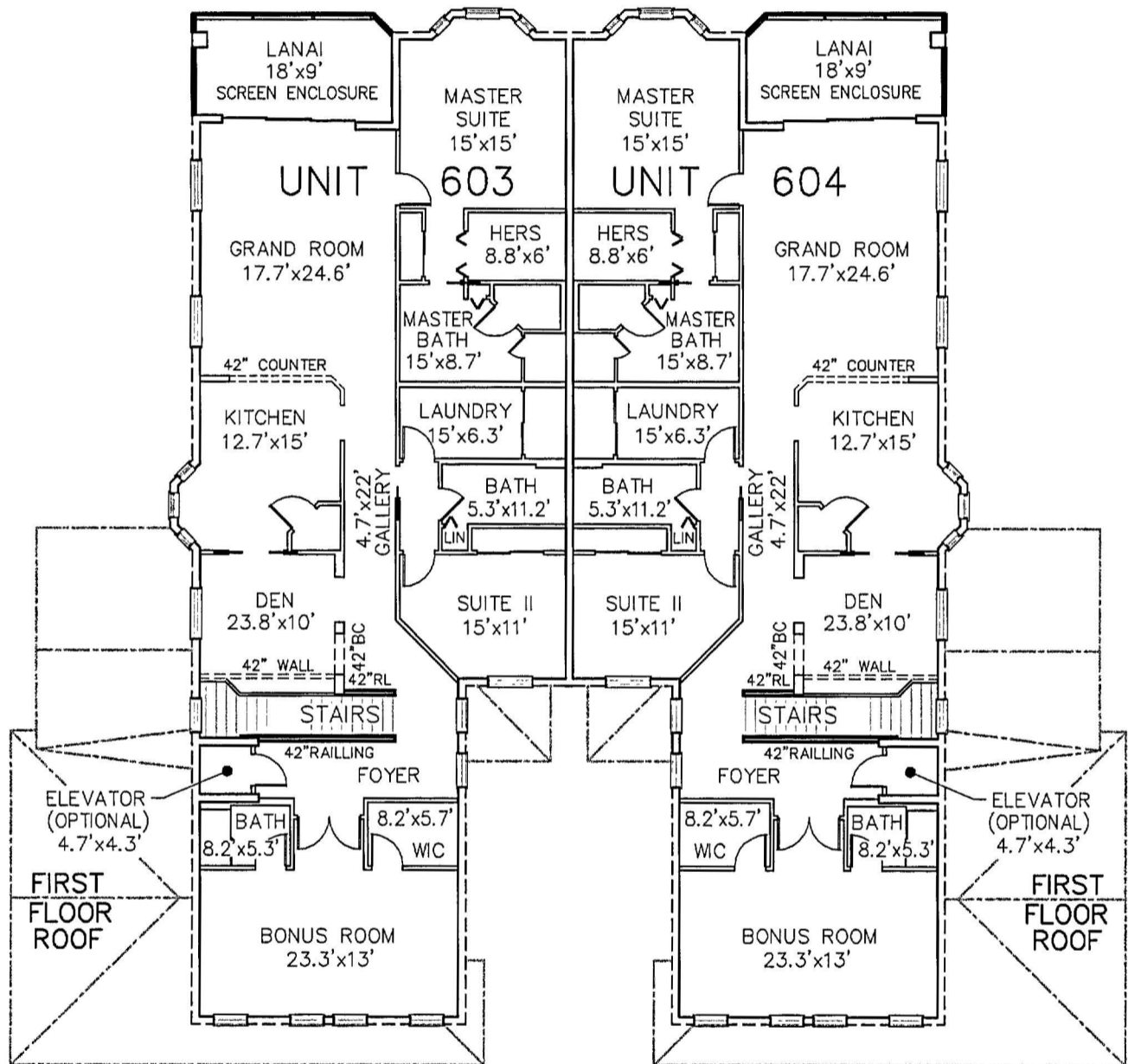
LB # 4709

EXHIBIT "B"
MISSION CARMEL
A CONDOMINIUM

Section 26, Township 20 South, Range 25 East
Lake County, Florida, Town of Howey-in-the-Hills

SHEET 38 OF 51

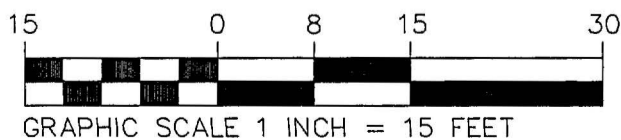
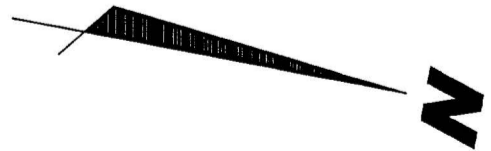
BUILDING 600
UNITS 603 & 604
INTERIOR WALLS



SECOND FLOOR PLAN

LEGEND

- RL RAILING
- BC BOOK CASE
- LIN LINEN
- WIC WALK-IN CLOSET



FARNER BARLEY
AND ASSOCIATES, INC.
350 NORTH SINCLAIR AVENUE • TAVARES, FL 32778 • (352) 343-8481

- ▲ ENGINEERS
- ▲ SURVEYORS
- ▲ PLANNERS

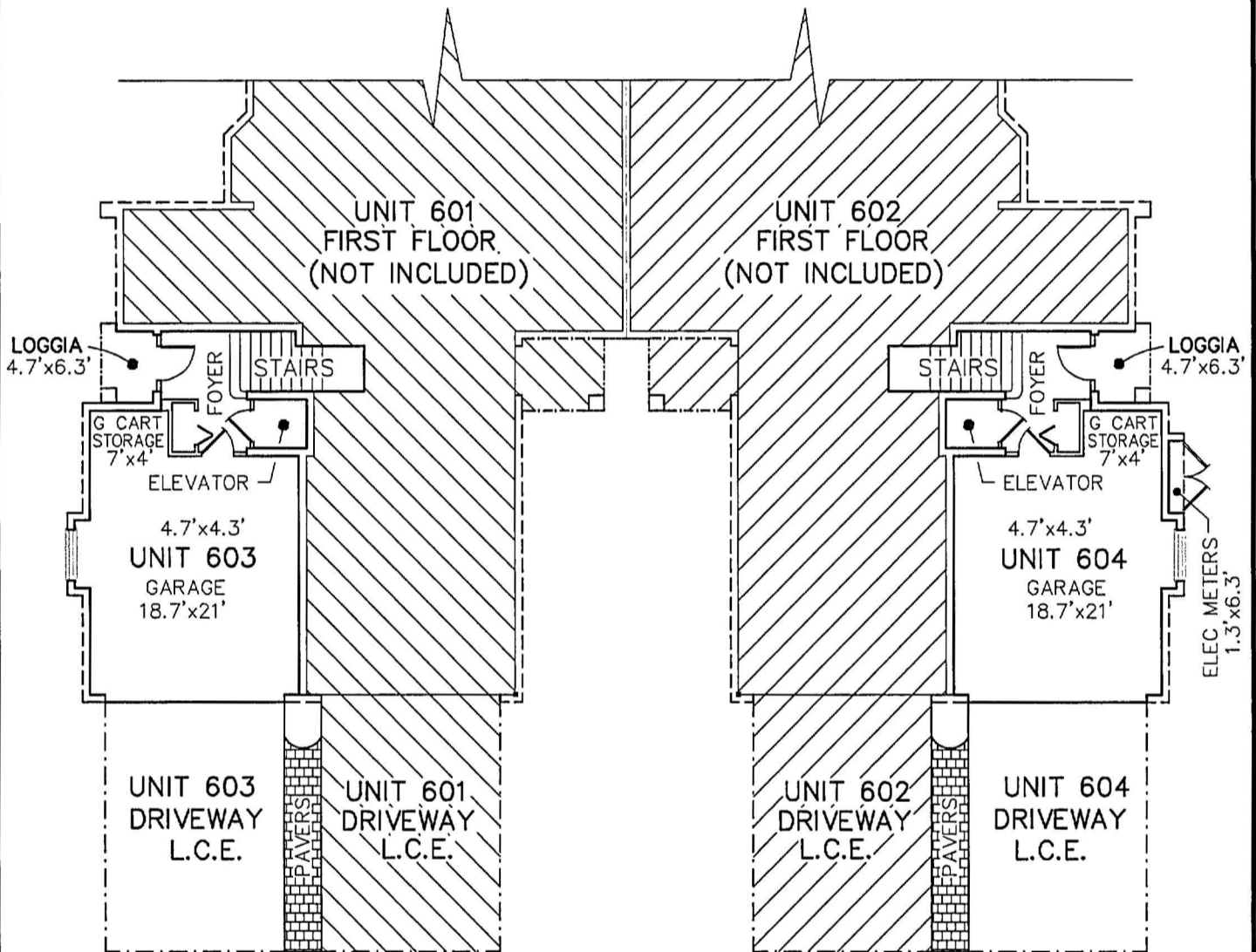
LB # 4709

EXHIBIT "B"
**MISSION CARMEL
 A CONDOMINIUM**

Section 26, Township 20 South, Range 25 East
 Lake County, Florida, Town of Howey-in-the-Hills

SHEET 39 OF 51

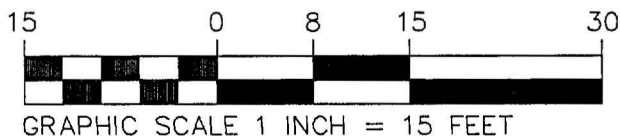
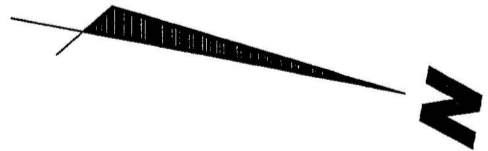
BUILDING 600
 UNITS 603 & 604
 INTERIOR WALLS



FIRST FLOOR PLAN

NOTE:
 GARAGE AND STAIRS DEPICTED ABOVE ARE ASSOCIATED
 WITH AND ARE APART OF THE SECOND FLOOR UNITS

LEGEND
 ELEC ELECTRIC



**FARNER
 BARLEY**
 AND ASSOCIATES, INC.
 350 NORTH SINCLAIR AVENUE ▲ TAVARES, FL 32778 ▲ (352) 343-8481

- ▲ ENGINEERS
- ▲ SURVEYORS
- ▲ PLANNERS

LB # 4709